



INSTRUCTION MANUAL TEC-12

**READ THE INSTRUCTIONS AND
WARNINGS IN THIS MANUAL CAREFULLY
BEFORE USING THIS FIREARM**

FIREARMS SAFETY

At TriStar, we believe that safe firearms handling is the most important consideration of anyone who uses firearms and ammunition. Please take a few minutes to thoroughly read and understand this instruction manual.

ALL GUNS ARE NOT ALIKE. Many makes and models of firearms may LOOK very similar. However, they differ widely in design and operation, and in the location and function of various controls.

You should completely understand this manual before you practice loading, unloading and firing with live ammunition.

Remember, firearms safety does depend on you!

Serial No. _____

Date Purchased: _____

Purchased From: _____

THIS MANUAL CONTAINS

1. Important warnings, which should be read and understood before using this firearm. **SAFE GUN HANDLING IS YOUR PERSONAL RESPONSIBILITY AT ALL TIMES.** Disregarding warnings in this manual may result in injury or death to you and others and damage to property.

2.Directions and procedures for handling, loading, firing and unloading.

3.Instructions for care, cleaning, repair and service of this shotgun.

This instruction and safety manual is designed to help you in learning how to properly use and care for your TriStar shotgun. Only when you are certain you have familiarized yourself with the function of your firearm should you practice loading, unloading and firing live rounds of ammunition.

This instruction manual should always accompany this firearm, and be transferred with it upon change of ownership. Should you ever need to replace it, this manual is available FREE upon request from TriStar.

DISCLAIMER OF LIABILITY

TriStar shall not be responsible for product malfunctioning or for physical injury, death or damage to property resulting from either intentional or accidental discharge of this firearm, its criminal or negligent use, improper or careless handling, unauthorized modifications or alteration, use of defective or improper or hand-loaded or (replaced) ammunition, or from its use for purposes or subjection to treatment for which it was not designed. For your safety, use only original high quality commercially manufactured ammunition in good condition that is appropriate to the caliber/gauge of your gun. TriStar shall not be responsible for product or its result from use of defective, improper or reloaded ammunition.

WARNING - LEAD EXPOSURE

Discharging firearms in poorly ventilated areas, cleaning firearms or handling ammunition may result in exposure to lead and other substances that may cause birth defects, reproductive harm and other serious physical injury. Have adequate ventilation at all times. Wash your hands thoroughly after exposure. Shooting or cleaning guns may expose you to lead.

WARNING:

Prior to removing this gun from its packaging, and prior to loading and firing, carefully and thoroughly read the entire instruction manual which gives advice on the gun's proper handling and functioning. However, your safety and that of others (including your family) depends on your responsible compliance with that advice. If unfamiliar with firearms seek supervised instruction.

FIREARMS SAFETY IS YOUR RESPONSIBILITY.

GENERAL SAFETY WARNINGS

1. Careless and improper handling of this gun could result in unintended discharge causing injury, death or damage to property. Safety must be the first and constant consideration when handling a firearm and ammunition.
2. This shotgun was designed to function properly in its original condition. Alterations can make it unsafe. Do not alter any part or add or replace parts.
3. This shotgun should only be carried with the bolt rearward in the locked position, action open and chamber empty to prevent accidental discharge.
4. Always handle and treat your gun as if it were loaded so you never fire it accidentally when you think it is unloaded. Never take anyone's word it is unloaded. Always check it yourself with your fingers off the trigger and the gun pointed in a safe direction.

5.Never place your finger inside the trigger guard unless you intend to fire.

6. Water, snow, mud, excessive lubricating oil or grease or any other material can obstruct the barrel of your gun. Always check the barrel of your firearm for obstruction before loading and firing. Clean a fouled gun immediately to ensure its correct and safe function.

7.Keep the gun's muzzle pointed in a safe direction at all times. Never let the muzzle of a firearm point at any part of your body, another person or at anything you do not intend to shoot. Always be certain of your target before firing.

8.Be sure you have and are using the proper ammunition. Use only high quality ammunition specifically designed for your gauge of shotgun. The barrel is marked with the size of shotshell it will accept. If the barrel is marked 3" it will accept 3" and 2 ³/₄ shotshells. Never load the chamber with a shell that is longer than the chamber is marked.

9.UNLOAD ALL FIREARMS WHEN NOT IN USE. NEVER STORE A LOADED FIREARM. Firearms and ammunition should be safely stored separately so that they are inaccessible to children or unauthorized users.

10.Always make sure your gun is unloaded before cleaning, storing or handing it to another person.

11.Always wear safety glasses while shooting to protect your eyes from injury by gun powder, gas, lubricant, dirt or metallic particles, carbon residue, sparks or other debris.

12.Always wear ear protection when shooting, especially on a range. Without ear protection, the noise from your gun, and other guns close to you, could leave a "ringing" in the ears for some time after firing. Repeated exposure to shooting noise could result in permanent hearing loss.

13. Never climb a tree, fence or wall while carrying a loaded firearm. Remove ammunition and hand the gun to someone else or place it on the ground on the other side of the obstacle before crossing it yourself. DO NOT lean a gun against a tree or other obstacle; it could fall and possibly discharge.

14. DO NOT shoot at a hard surface or at water. Bullets and shot can ricochet or bounce off and travel in unpredictable directions with great velocity.

15. Firearms and alcohol DO NOT mix. Never drink alcoholic beverages or take drugs before or during shooting, as this constitutes criminal disregard for your safety and that of others. Never use a gun while you are taking medication unless you have checked with your doctor to ensure your fitness to handle your gun safely.

16. If you have any doubts about your ability to handle or use this shotgun safely, seek supervised instruction.

17. Horseplay has no place around firearms. Guns can't think - you can!

18. Remember, safety is your responsibility, be a safe shooter.

19. FOLLOW THE LAW: Obey all local, state and federal laws regarding storage, shooting and transporting your firearm.

NOMENCLATURE



Fig.1

ASSEMBLY

WARNING: Read and understand all instructions and warnings in this manual **BEFORE** using this shotgun. It is important to learn the parts of your shotgun and their functions before using this firearm.

Before assembling this shotgun, visually and physically inspect the chamber, elevator and magazine tube to be certain that the shotgun is unloaded. This firearm, when shipped from the factory, has the barrel removed and packed separately in the shipping carton.

1.Before installing the barrel, remove all dirt and excess oil from gun, especially from the action bar and gas system parts, also barrel interior and ends.

2.Remove the magazine cap (unscrew counter clockwise) and sling swivel from the magazine tube (Fig 2).

3.Mount the barrel to receiver by pushing forward on the operating handle so the bolt protrudes slightly from the receiver (Fig 3). Slide the barrel ring over the magazine tube (Fig 4) until the barrel breech is completely seated into the receiver (Fig 5).

4.Install sling swivel by sliding it over the magazine tube (Fig 6).

5.Screw the magazine cap (clockwise) onto the front of the magazine tube (Fig 7), finger-tight. Make sure that the sling swivel is properly seated and centered on the magazine cap (Fig 7A) and the barrel is firmly seated.



Fig.2



Fig.3



Fig.4



Fig.5



Fig.6



Fig.7

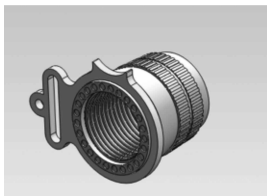


Fig.7A



OPERATING INSTRUCTIONS

WARNING: Read and understand all instructions and warnings in this manual **BEFORE** using this shotgun. It is important to learn the parts of your shotgun and their functions before using this firearm.

SAFETY BUTTON

The safety button is located at the front of the trigger guard (Fig 8) and must be manually moved to the desired position by the shooter.

To put the safety in the “Safe” or “On” position, the safety button must be pushed from the left side (side opposite of the ejection port) so that it moves all the way to the right. The button must always be pushed fully to the right until it moves no further to be in the “Safe” or “On” position (Fig 9).



Fig.8



Fig.9

The safety button is designed to function only as described above and should not be reversed. DO NOT attempt to remove or reverse the safety button. Doing so may result in an unsafe condition which can cause serious injury or death.

WARNING: Do not rely solely on your gun's safety. Treat every gun as if it is loaded and ready to fire. The safety is a mechanical device and is not intended to serve as a substitute for common sense or safe gun handling. Always keep the muzzle pointed in a safe direction.

ACTION SELECTION

This shotgun can be fired in the pump action mode or in the semi-automatic mode by the simple turn of the selector ring located in the front of the forend.

Pump Action Mode. To operate in pump action mode, turn the selector ring clockwise as far it will go and position it so that the selector ring is seated against the barrel ring and fastened to the action bar unit (Fig 10). To ensure that the selector ring is in the correct position, pull back on the operating handle. The forend should also move backwards. In this mode, the action (bolt) can be opened by pulling the forend back toward the receiver (Fig 11). To close the action, the bolt release button must be pressed, allowing the bolt to move forward and close (Fig 12).



Fig.10



Fig.11



Fig.12

NOTE: The pump action mode is designed for the use of light loads. Do not attempt to use heavy or magnum loads in the pump action mode.

Semi-Automatic Mode. To operate in semi-automatic mode, turn the selector ring clockwise as far as it will go and push the forend up toward the barrel ring until the selector ring fits into the barrel ring (Fig 13). Release the selector ring and it will turn counter clockwise, locking into the barrel ring. The forend should be stationary and it should not be able to slide up or down. In this mode, the action (bolt) can only be opened by pulling back on the operating handle (Fig 14). To close the action, the bolt release button must be pressed, allowing the bolt to move forward and close (Fig 12).

NOTE: Always use ammunition that generates enough recoil to cycle when the action is in the semi-automatic mode. Lighter loads may not cycle in the semi-automatic mode.

Changing Modes. Switching from pump action mode to semi-automatic mode. Be sure the bolt is closed. Turn the selector ring clockwise as far as it will go (Fig 15) and push the forend up toward the barrel ring until the the selector ring is locked into the barrel ring (Fig 16). The forend should be stationary and it should not be able to slide up or down.

To switch back to the pump mode, be sure the bolt is closed. Turn the selector ring as far as it will go and pull down on the forend until the selector ring is free from the barrel ring and it is seated against the barrel ring and fastened to the bolt-swivel unit (Fig 15).



Fig.13



Fig.14



Fig.15



Fig.16

MAGAZINE CAPACITY

This shotgun has a cartridge capacity of five (5) 2 ³/₄ inch shotshells (plus one (1) shotshell in the chamber). Depending upon ammunition tolerance variations, total capacity may be reduced by one (1) round when using 3 inch shotshells.

MAGAZINE PLUG

You are responsible for complying with all laws regarding magazine capacity. This shotgun is not equipped with a magazine plug. To obtain a magazine plug for hunting purposes, contact TriStar Sporting Arms.

BARREL CHOKES

This TriStar shotgun is equipped with Beretta®/Benelli® screw in choke tubes. **NEVER FIRE** your gun or run cleaning tools through a barrel without having the choke installed. The threads of the choke tube and the internal threads of the barrel should be cleaned after each use and before installation of the tube.

To Remove Choke Tube: Loosen the choke by turning it counterclockwise. When the choke tube is loosened, it can be completely removed by hand. Place choke tube on a clean, dry surface.

To Install Choke Tube: Screw the choke tube clockwise into the barrel by hand and then tighten the tube until snug. These tubes are designed to screw into the barrel until the precision threads on the choke are fully seated inside the barrel when properly installed. This is also true for extended choke tubes that extend beyond the end of the barrel. **DO NOT** use excessive force when installing.

WARNING: Always make sure the safety is in the “Safe” or “On” position. Visually and physically check the chamber, elevator and magazine tube to be certain the shotgun is unloaded before removing, installing or checking the choke tube.

USAGE OF CHOKE TUBES

DO NOT use bent or deformed choke tubes as these may result in tube or barrel damage upon firing which may cause serious injury to you and/or those around you. Inspect choke tubes periodically to ensure they are snug inside of the barrel, properly installed and in good condition. **CAUTION:** Always make sure the firearm is unloaded and the safety is in the “Safe” or “On” position before checking the choke tube. Pay special attention to the threaded end of the choke tube to be certain it is not deformed or dented. Never fire the shotgun without a choke tube properly installed. Failure to do so will damage the precision threads on the inside of the barrel. Firing the shotgun with loose choke tubes may lead to damage to the choke tube and barrel, and may result in serious injury to you and/or those around you.

AMMUNITION

Be sure you have and are using the proper ammunition. Use only high quality ammunition specifically designed for your gauge of shotgun. The barrel is marked with the size of shotshell it will accept. If the barrel is marked 3” it will accept 3 inch and 2 ³/₄ inch shotshells. **Never load the chamber with a shell that is longer than the chamber is marked.**

The unique design of this shotgun requires special attention to the ammunition being used. **Do not attempt to shoot heavy loads in the pump action mode.**

Heavy loads should only be used when the shotgun is in the semi-automatic mode.

STEEL SHOT WARNING

You should be aware of the following differences and cautions:

Never shoot steel shot loads in a full choked barrel or an improved modified choked barrel. To do so may cause the barrel to swell or rupture. The choke (constriction) in all modern shotguns has been established based on the pattern performance of shot shells loaded with lead shot. When using steel shot shells, you will notice a different performance in pattern density versus the established lead shot pattern, because steel shot is harder and lighter than lead shot.

In general, steel shot fired with a modified choke will produce the equivalent of a lead shot full choke pattern. This is true of all steel shot sized up to and including no. 2. The established improved cylinder choke will produce the equivalent of a (lead) modified pattern.

All steel shot sized larger than no. 2, and including special sized such as BB, BBB, F, T, etc., should be used with improved cylinder and cylinder (skeet) chokes. These steel shot sizes, when used in an improved cylinder choke, will produce the equivalent to (lead) full choke patterns. The cylinder choke or bore will produce the equivalent of a modified (lead) pattern.

WARNING: THE ACCIDENTAL LOADING AND DISCHARGE OF SHELLS OF THE WRONG GAUGE IN YOUR GUN CAN RESULT IN DAMAGE TO YOUR GUN AND INJURY TO THE SHOOTER AND/OR OTHERS. To be safe, carry only the proper gauge ammunition when shooting.

LOADING

WARNING: Read and understand all instructions and warnings in this manual BEFORE using this shotgun. It is important to learn the parts of your shotgun and their functions before using this firearm.

Be sure of the target and what is beyond before firing.

To load shotgun, be sure the safety is in the “Safe” or “On” position. Open the action by pulling the operating handle completely rearward until it locks in the open position. This will expose the chamber and open the ejection port. Be sure that both the chamber and the magazine are unloaded. Press the bolt release, allowing the action to close.

1.The dot indentation on the carrier release lever indicates that the hammer is cocked. It must be clearly visible before loading. If it is not visible, pull the operating handle back (Fig 17) and open the action. Press the bolt release latch and close the action (Fig 18).

2.With the bolt closed and the hammer cocked, turn the shotgun upside down. Insert cartridge into the magazine tube (Fig 19). Push cartridge until it is held in place by the cartridge latch (Fig 20). Repeat the operation until the magazine is fully loaded.

3.The shotgun cannot be fired until a cartridge is loaded into the chamber. To load the chamber use the following procedure. Pump Action Mode: Open the action by pulling the forend rearward toward the receiver (Fig 11). One cartridge will be released from the magazine tube and it will rest on top of the carrier. Close the action by pushing the forend forward toward the muzzle . The bolt will chamber the cartridge from the carrier (Fig 21). Semi-Automatic Mode: Open the action by pulling back on the operating handle (Fig 14). One cartridge will be released from the magazine tube and it will rest on top of the carrier. Press the bolt release latch so the bolt can move forward, chambering a cartridge from the carrier (Fig 12).

Warning: Always have the shotgun pointed in a safe direction and the safety “on” when loading shotgun.



Fig.17



Fig.18



Fig.19



Fig.20



Fig.21

FIRING

WARNING: Read and understand all instructions and warnings in this manual BEFORE using this shotgun. It is important to learn the parts of your shotgun and their functions before using this firearm. Be sure of your target and what is beyond before firing.

After loading shotgun it is now ready to fire. Disengage the safety by pushing the safety button to the “Fire” or “Off” position, the safety button must be pushed from the right side (side of the ejection port) so that it moves all the way to the left. The button must always be pushed fully to the left until it moves no further to be in the “Fire” or “Off” position (Fig 8). This will display a red band marking around the safety as an indicator that the safety is in the “Fire” or “Off” position.

Pump Action Mode. Pulling the trigger through its full travel to the rear will fire the shotgun and discharge only one (1) cartridge at a time. After firing, pull back the forend to open the action. The spent cartridge will eject. Close the action by pushing forend forward toward the muzzle. This will allow another cartridge to be fed from the magazine tube into the chamber. Repeat steps above to continue firing.

Semi-Automatic Mode. Pulling the trigger through its full travel to rear will fire the shotgun and discharge only one (1) cartridge at a time. The empty shell will be automatically ejected through the ejection port. Be sure all observers are clear of the path of ejection, as the empty shells are thrown out with considerable force and may result in serious injury. The semi-automatic action will automatically feed the next cartridge from the magazine tube into the chamber each time the shotgun is fired. The bolt will automatically close after each cartridge is fired, until all of the cartridges in the magazine tube have been spent. After the last cartridge has been spent, the action will remain locked open. You should never use this feature as a guide for determining if the shotgun is unloaded! Always visually and physically inspect the chamber, elevator and magazine tube to be certain the shotgun is unloaded.

CAUTION: In case of a misfire, wait at least 30 seconds while keeping the gun pointed in a safe direction. Then, carefully open the action away from yourself and others. If the primer on the rim is indented, the shell should be discarded in a manner that would prevent accidental injury to you and/or those around you. If there is no indentation on the primer or rim, your gun has malfunctioned and should be serviced by a qualified gunsmith. If the gun is under warranty it must be serviced by an authorized TriStar Gunsmith to not void warranty.

If at any time during firing, the sound of any shell is noticeably louder or softer than the previous shells fired, STOP! DO NOT load or fire additional shells until you have put the safety in the “Safe” or “On” position and safely unloaded your shotgun. Inspect the shotgun for possible damage or obstructions in the chamber or bore. (The bore is the inside surface of the barrel). Firing the shotgun with a bore obstruction can cause damage to the firearm and may result in serious injury to you and/or those around you.

UNLOADING

WARNING: Read and understand all instructions and warnings in this manual BEFORE using this shotgun. Always keep the shotgun pointed in a safe direction and the safety in the “Safe” or “On” position.

Before unloading, check to assure that the safety is in the “Safe” or “On” position. At no time during unloading should you allow your fingers or any other object to touch the trigger.

Pump Action Mode. Open the action by pulling the forend rearward toward the receiver (Fig 11). The cartridge in the chamber will eject and the next cartridge from the magazine tube will rest on top of the carrier. Close the action by pushing forward on the forend toward the muzzle. Repeat the steps above until all of the cartridges in the magazine tube have been removed.

Semi-Automatic Mode. Open the action by pulling back on the operating handle (Fig 14). The cartridge in the chamber will eject. Press the bolt release latch (if needed) so the bolt can move forward, chambering the next cartridge from the carrier. Repeat the above steps until all of the cartridges in the magazine tube have been removed.

Note. This shotgun can also be unloaded without using the above methods. Be sure that the safety is in the “Safe” or “On” position. Push the carrier inside the receiver (Fig 22) and at the same time open the action as described above in the pump action mode or in the semi-automatic mode. Close the action (as described above in the pumps action mode or in the semi-automatic mode). Turn the shotgun upside down. Push the carrier inside of the receiver. Press the front of the carrier latch. The first cartridge will eject out of the magazine tube. Remove cartridge. Repeat these steps until all of the cartridges have been removed from the magazine tube.

Warning: Always have the shotgun pointed in a safe direction and the safety “on” when loading or unloading shotgun.

To remove shells from the magazine tube, turn the shotgun so that the trigger guard is facing upward. Push the elevator down and hold it. While holding the elevator down, depress the front of the shell stop located on the opposite side of the receiver from the ejection port. This will release one (1) shell from the magazine tube under pressure.



Fig.22

DISASSEMBLY

WARNING: Read and understand all instructions and warnings in this manual **BEFORE** using this shotgun. Always make sure the shotgun is completely unloaded before disassembly.

Disassemble, clean and oil your shotgun at regular intervals or when it has been exposed to sand, water or other adverse conditions.

Before disassembling the shotgun, visually and physically inspect the chamber, elevator and magazine tube to be certain the shotgun is unloaded.

- 1.Place action selection into the “pump action mode” (See ACTION SELECTION).
- 2.Unscrew the magazine cap (counter clockwise) from the magazine tube (Fig 2).
- 3.Slide the sling swivel off of the magazine tube.
- 4.Pull the barrel forward toward the muzzle, sliding the barrel ring off of the magazine tube (Fig 23) until the barrel is completely removed.
- 5.Remove the selector ring from the forend by turning the selector ring clockwise as far as it will go. While holding the receiver with one hand, pull the forend forward toward the muzzle, sliding it off of the magazine tube until it is completely removed (Fig 24).
- 6.Pull the operating handle out of the bolt (this will require a firm tug) (Fig 25).



Fig.23



Fig.24



Fig.25

7.Remove the action bar assembly form the receiver and slide it off of the magazine tube (Fig 26). Be sure to secure the bolt while removing (Fig 27).

8.Remove bolt from the action bar (Fig 28). **NOTE:** The bolt assembly is complex and should not be disassembled. Disassembly should only be performed by a qualified gunsmith. Do not attempt to disassemble.

9.Remove the trigger assembly pin by using a punch to drive the pin through the receiver (Fig 29).

10.Remove the trigger assembly by pressing the bolt release button and pulling down and away from the receiver (Fig 30). **NOTE:** The trigger assembly is complex and should not be disassembled. Disassembly should only be performed by a qualified gunsmith. Do not attempt to disassemble.

Field disassembly is now complete. **Further disassembly is not recommended and not necessary for routine cleaning or regular maintenance.**



Fig.26



Fig.27



Fig.28



Fig.29



Fig.30

MAINTENANCE AND CLEANING

CAUTION: Make sure the gun is UNLOADED

1. Make sure all components of the action including the bolt assembly and bolt action slide are cleaned; remove accumulated residue, and lightly oil with high quality gun oil. Action parts will remain cleaner longer if lubrication is used sparingly. DO NOT use silicone or lanolin.

2. This shotgun is equipped with a multi-choke tube system. DO NOT use a brass brush to clean the barrels without having a choke tube installed. Barrels that utilize choke tubes must also have the choke tubes removed to clean and oil the precision threads inside the barrels and the choke tubes themselves. This will protect the precision threads and prevent dirt build up that can cause choke tubes to become difficult to remove.

3. Wipe all exposed metal surfaces with an oiled cloth before storing. After extended periods of heavy use, your gun should be taken to a qualified gunsmith to have the action disassembled for professional cleaning and lubrication.

4. To ensure optimum performance, we recommend thorough cleaning of your firearm after every 200 rounds. However, unusually dusty, dirty or harsh weather conditions, or use of ammunition which leaves significant powder residue may require more frequent cleaning. If the firearm is to be stored for a long period of time, it should be thoroughly cleaned and oiled. DO NOT plug the barrel or store in a fabric-lined case that will absorb lubricant from the firearm, as this may result in corrosion to the unprotected metal surfaces.

5. DO NOT squirt or pour oil into the inside mechanism because it may hamper proper functioning. Over-lubrication should be avoided, especially during below freezing conditions. Many lubricants thicken in low temperatures which could affect the operation of the firearm. Exposure to unfavorable weather or moisture from condensation requires additional care to prevent corrosion to the firearm.

6. Clean the inside of the receiver with a rag or soft brush, giving special attention to the tracks which guide the bolt and slide. Place a few drops of light oil in these tracks when clean. Care should be taken when cleaning the exterior surfaces of the receiver to prevent cosmetic damage. **Never use a brush with metal bristles, as this may remove the protective coating on the receiver. Also, CAUTION should be exercised to avoid exposure of camouflage pattern and “soft-touch” (which are on most TriStar Synthetic Semi-Automatic Shotguns) to strong solvents and insecticides, as this may remove the protective coating and/or cause the “soft-touch” coating to peel off, voiding Warranty.**

7. Brush loose residue from trigger housing with a soft bristle brush. Never use a brush with metal bristles, as this may remove the protective coating on the trigger housing.

8. Apply a light coat of gun oil to all metal parts and then wipe thoroughly with a dry cloth. Excess oil will accelerate the build-up of carbon residue in the gas system and may have a negative effect on the shotguns performance.

STORAGE

Clean thoroughly and oil your gun before storage. Store your firearm in a dry place to prevent corrosion. **Store the gun away from children and in a place where it cannot be obtained by those unauthorized to use it. Always store gun unloaded and separately from any ammunition.**

USE YOUR SHOTGUN CAREFULLY AND SAFELY

HAZARDOUS MATERIAL WARNING

Discharging firearms in poorly ventilated areas, cleaning firearms or handling ammunition may result in exposure to lead and other substances that may cause birth defects, reproductive harm and other serious physical injury. Have adequate ventilation at all times. Wash your hands thoroughly after exposure. Shooting or cleaning guns may expose you to lead.

| PART LISTING | | | PART NAME | |
|--------------|--------------------------------|----|------------------------------|-----------|
| NO | PART NAME | NO | PART NAME | PART NAME |
| 1 | BARREL | 38 | SAFETY BUTTON | |
| 2 | BARREL LUG | 39 | TRIGGER PIN | |
| 3-A | FRONT SIGHT | 40 | TRIGGER GUARD | |
| 3-B | FRONT SIGHT BASE | 41 | TRIGGER SPRING PIN | |
| 3-C | FRONT SIGHT SCREW | 42 | DISCONNECTOR PIN | |
| 4 | RECEIVER | 43 | DISCONNECTOR SPRING | |
| 5 | RECEIVER PIN | 44 | DISCONNECTOR | |
| 6 | CARRIER LATCH | 45 | SAFETY SPRING | |
| 7 | CARRIER LATCH PIN | 46 | SAFETY SPRING PIN | |
| 8 | RELEASE BUTTON | 47 | HAMMER SPRING | |
| 9 | STOCK BOLT WASHER | 48 | HAMMER SPRING PIN | |
| 10 | CARTRIDGE EJECTOR | 49 | FIRING PIN | |
| 11 | EJECTOR PIN SPRING | 50 | FIRING PIN SPRING | |
| 12 | EJECTOR PIN | 51 | BOLT | |
| 13 | STOCK | 52 | BOLT HANDLE PIN | |
| 14 | STOCK BOLT | 53 | BOLT INERTIA SPRING | |
| 15 | SELECTOR RING | 54 | LOCKING HEAD PIN | |
| 16 | FOREND RETAINING SCREW | 55 | LOCKING HEAD | |
| 17 | ACTION SELECTOR | 56 | EXTRACTOR SPRING | |
| 18 | ACTION SELECTOR SPRING | 57 | EXTRACTOR SPRING | |
| 19 | ACTION BAR | 58 | BOLT HANDLE RETAINING SPRING | |
| 20 | RETURN SPRING | 59 | BOLT HANDLE | |
| 21-A | FOREND | 60 | PLATE | |
| 21-B | FOREND SLIDE SUPPORT | 61 | PIN | |
| 22 | MAGAZIN TUBE WASHER | 62 | MAGAZINE SPRING | |
| 23 | MAGAZIN TUBE | 63 | SLING SWIVEL | |
| 24 | MAGAZIN TUBE PLUG | 64 | BOLT HANDLE PIN | |
| 25 | NUT | 65 | REAR SIGHT | |
| 26 | MAGAZIN CAP LOCKING PIN SPRING | 66 | TRIGGER SPRING PIN | |
| 27 | MAGAZIN CAP LOCKING PIN | 67 | RECOIL PAD SCREW | |
| 28 | RECOIL PAD | 68 | EXTRACTOR PIN | |
| 29 | MAGAZIN CAP | 69 | PICCATINNY RAIL SCREW | |
| 30 | HAMMER | 70 | PICCATINNY RAIL | |
| 31 | BREECH BOLT LATCH PIN | 71 | STOCK RETAINING NUT | |
| 32 | BREECH BOLT LATCH | 72 | CARRIER LATCH SPRING | |
| 33 | CARRIER | 73 | FIRING PIN O-RING | |
| 34 | HAMMER SNAP RING | 74 | EXTENDED PORTED CHOKE | |
| 35 | HAMMER SNAP RING PIN | 75 | TACTICAL TYPE SLING | |
| 36 | CARTRIDGE DROP LEVER | 76 | STOCK SLING SWIVEL | |
| 37 | CARTRIDGE DROP LEVER SPRING | | | |

SERVICE INSTRUCTIONS

LIMITED 5 YEAR WARRANTY

PARTS

To order parts, please be ready with the following information: Your name, address, telephone number, firearm serial number, make and model and payment information. Call TriStar Service Department (816) 421-1400

FOR SERVICE:

Ship the firearm prepaid to:
TriStar Sporting Arms

1816 Linn St.

North Kansas City, MO. 64116

THANK YOU

Thank you for purchasing a TriStar shotgun. We are sure this gun will bring you years of hunting and/or shooting pleasure. Your satisfaction is the key to our success. Please let us know if we can be of service and relay any observations about your guns performance or appearance. For your questions or comments please visit www.tristararms.com

PURCHASER'S RECORD

Model Number

Purchase Date

Gauge or Caliber

Serial Number

Purchase Price

Store Name

SERVICE AGREEMENT AND LIMITED WARRANTY

TriStar agrees to service its products free of charge for defects in materials and workmanship in accordance with the service agreement listed below. The obligation of TriStar under this agreement is limited to the repair or replacement of unserviceable parts and does not cover any incidental or consequential damages. Other than the express warranty contained herein, TriStar makes no warranties, expressed or implied.

TriStar will repair or replace any unserviceable part(s) for one (1) year from date of purchase and further will supply free parts (wood not included) for an additional four (4) years in accordance with the above warranty statement provided your firearm had not been altered, abused, willfully damaged or damaged by overpressure ammunition. This agreement is not transferable; its benefits apply only to the original purchaser.

To obtain free service during the time this agreement is in effect, make sure your firearm is unloaded and send to TriStar Sporting Arms.

This agreement and the warranties contained herein are void if your registration is not received within thirty (30) days from date of purchase.

Please visit www.tristararms.com to fill out and submit warranty.

SHIPPING

When returning your firearm for service, please take care in packing. Disassemble your gun, wrap in a safe manner and place it in its original box. (THIS BOX WILL PROTECT THE GUN BUT IS NOT DESIGNED FOR SHIPPING). Wrap box in a cardboard box approved for interstate shipping. TriStar is not responsible for damage incurred during shipping.



TriStar Sporting Arms
1816 Linn Street
North Kansas City, MO 64116
Phone : 816 - 421 - 1400
Fax : 816 - 421 - 4182