



PUMP-ACTION SHOTGUN INSTRUCTION MANUEL

**WARNINGS IN THIS MANUAL CAREFULLY
BEFORE USING THIS FIREARM**

GUN SAFETY RULES

Observe these rules of safe gun handling.

1. Always keep the muzzle pointed in a safe direction. Watch the muzzle at all times: never point a gun, accidentally or intentionally at any person or anything you do not intend to shoot. Identify the target before shooting do not shoot at sounds.

2. Always treat a gun as if it is loaded - it may be!

3. Keep your finger off the trigger while operating the action and at all other times until you are ready to shoot.

4. Keep the safety "on" or in the "safe" position at all times until you are ready to fire. Do not rely on your gun's safety, the safety on any gun is a mechanical device and is not intended as a substitute for common sense or safe gun handling.

5. Learn how your gun functions and handles. If you do not thoroughly understand the proper use and care of your gun, seek the advice of someone who is knowledgeable.

6. Do not alter or modify any part of the firearm.

7. Store guns unloaded, separate from any ammunition, and out of the reach of children.

8. Be sure the barrel is clear of any obstructions before loading. Make it a habit to check the barrel every time before loading.

9. Be sure you have and use the proper ammunition. A 20 gauge shell will enter a 12 gauge chamber far enough so that a 12 gauge shell can be loaded behind it. Also, a 3 inch shell may fit into a 2 $\frac{3}{4}$ inch chamber, but the crimp at the mouth of the shell will unfold into the forcing cone. If either of these things occur and you fire the gun, the gun will explode, damaging the gun and possibly causing serious injury or death to you and those around you.

10. Wear protective shooting glasses and adequate ear protection when shooting.

11. Never climb or jump over anything, such as a tree, fence, or ditch, with a loaded gun. Open the barrel, remove the shells and hand the gun to someone else or place it on the ground on the other side of the obstacle before crossing it yourself. Do not lean a gun against a tree or other object; it could fall and possibly discharge.

12. Do not shoot at a hard surface or at water. Bullet and shot can ricochet or bounce off and travel in unpredictable directions with great velocity.

13. Never transport a loaded gun. DO not place a loaded gun into a vehicle. The gun should be unloaded and placed into a case when not in use.

14. Never drink alcoholic beverages before or during shooting.

INTRODUCTION TO TRISTAR ARMS

For many years, TriStar has been importing quality shotguns. Combine the old world quality with modern technology, and you have TriStar Shotguns.

We at TriStar thank you for the privilege of delivering a product to you that will provide you with years of pleasurable use. Happy shot gunning.

ABOUT YOUR PUMP SHOTGUN

Your TriStar is manually operated. Once a shell has been fired, the locking lug in the bolt moves down, unlocking the gun. The forend can then be moved to the rear and forward again, ejecting and loading a new shell.

To open the bolt without firing the gun, depress the action bar lock, located just beside and forward of the trigger. This allows for opening the action without dry firing.

The magazine tube will only accept 5pcs, 2 3/4. shells or 4pcs, 3" shells, or 3pcs, 3,5" shells.

Please check if your shotgun model includes mobile chokes. The cobra tactical and cobra force barrels are cylinder bore.

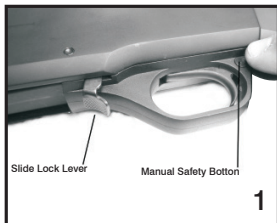
SAFETY SWITCH OR BUTTON

The safety is designed to stop the trigger mechanism.

DON'T RELY ON YOUR GUN'S SAFETY. TREAT EVERY GUN AS IF IT WERE LOADED AND READY TO FIRE. The safety on any gun is a mechanical device, and it is not intended as a substitute for common sense or safe gun handling. Always keep the muzzle pointed in a safe direction.

A- The safety is located behind the trigger, and provides protection against accidental or unintentional discharge under normal usage when properly used.

B- To engage the safety, push the button so that it protrudes from the right side of the gun and the **RED BAND MARKING CAN NOT BE SEEN**. The safety should always be in the "on" or "safe" position until you intend to fire the gun. (Photo 1)

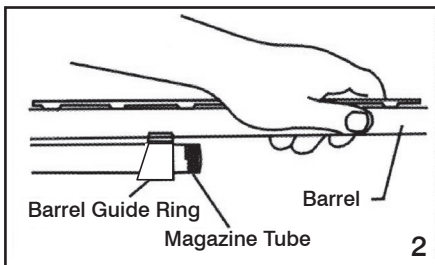


C- When you are ready to fire the gun, press the safety button to the “off” position so that the safety protrudes from the left side of the gun and the **RED BAND MARKING IS SHOWING**.

DANGER: The gun will fire when the trigger is pulled intentionally or accidentally when the **RED BAND MARKING IS SHOWING**.

ASSEMBLY

1. Remove the magazine cap.
2. Press upward on the action bar lock. Pull the forend approximately half way rearward.
3. Hold the barrel ahead of the barrel guide ring (See picture 2).



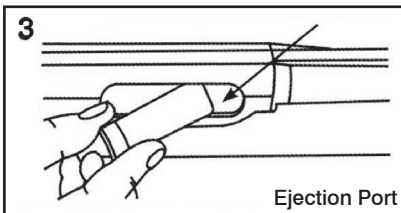
4. Slide the barrel guide ring over the magazine tube. Clean the barrel following the instructions on Page 8.
5. Press upward on the action bar lock.
6. Align the ejector on the inside of the barrel with the slot in the bolt.
7. Carefully set the barrel into the receiver. **DO NOT FORCE IT!**
8. Replace the magazine cap. Tighten.

DISASSEMBLY

1. Make sure the gun is unloaded!
2. Point firearm in a safe direction
3. Push up on the action bar lock.
4. Slide forend forward half way.
5. Unscrew and remove the magazine cap.
6. Pull the barrel carefully out of the receiver.
7. Push the carrier forward.
8. Press and hold the action bar lock.
9. Slide the forend forward and off the magazine tube.

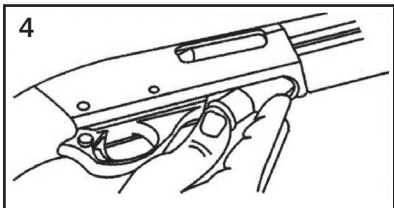
LOADING YOUR SHOTGUN -ONE SHELL ONLY-

1. Put safety in the "on" position.
2. Point the gun in a safe direction.
3. Push up on the action bar lock.
4. Pull the forend completely to the rear and **carefully hold it for the return spring models**
5. Put one shell through the ejection port, making sure it is the correct gauge and length. (See picture 3)
6. Push the forend forward and close the action.



FULLY LOADING YOUR SHOTGUN

1. Put safety in the "on" position.
2. Point the gun in a safe direction.
3. Push up on the action bar lock.
4. Pull the forend completely to the rear and **carefully hold it for the return spring models.**
5. Put one shell through the ejection port. Making sure it is the correct gauge and length (See Picture 3)
6. Push the forend forward and close the action.
7. Push as shell upward against the bottom of the carrier. (See picture 4)
8. Push two (2) to four (4) shells, one at a time, fully forward into the magazine tube.



**USEGE OF CHOKE TUBES
(IF YOUR SHOTGUN INCLUDES)**

	SKEET	IC	M	IM	F
CHOKE TUBE					
BBLs	CL	★ ★ ★ ★	★ ★ ★	★ ★	★

The choke controls how open or tight the pattern of the shot will be. The chart below lists the chokes available (from open to tight), and the core spending marks that indicate the specific choke.

Never fire your gun or run cleaning tools through a barrel that uses a choke tube without having a choke installed. The threads of the choke tube and the internal threads of the barrel should be cleaned after each use and before installation of the tube. Your TriStar shotgun uses Beretta®/Benelli® style choke tubes.

To install a tube, insert the tube into the top of the barrel and tighten with your fingers. Once the tube is finger tightened, tighten the rest of the way with the appropriate choke tube wrench until the tube is snug. DO NOT over tighten or forcefully tighten with the wrench.

**IMPORTANT
USAGE of STEEL SHOT**

The choke (before constriction) in all modern shotguns has been established based on the pattern performance of shot shells loaded with lead shot. When using steel shot shells, you will notice a different performance in pattern density versus the established lead shot pattern, because the steel shot is harder and lighter than lead shot.

You should be aware of the following differences and cautions:

Never shoot steel shot loads in a full choked barrel or an improved modified choked barrel. Doing so, may cause the barrel to swell or rupture. In general, steel shot fired with a modified choke will produce the equivalent of a lead full choke pattern. This will be true of all steel shot sized up to and including no. 2. The established improved cylinder chokes will produce the equivalent of a (lead) modified pattern.

All steel shot sized larger than no. 2, and including special sized such as F,T, etc., should be used only with improved cylinder chokes. These steel shot sizes, when used in an improved cylinder choke, will produce equivalent to (lead) full choke patterns. The established cylinder choke or bore will produce the equivalent of a modified (lead) pattern. Additional information concerning the use of steel shot is available from the ammunition companies.

MAINTENCE AND CLEANING

Caution: Make sure the gun is UNLOADED.

1. Make sure the broad, polished finely fitted mating surface of the breech block and receiver is especially clean and lightly oiled with high quality gun oil. Do not use silicone or lanolin (Do not use WD-40).

2. Run an oil patch through the bore with a cleaning rod starting from the breech end. To prevent leading, use a cleaning solvent and brass brush to clean the bore periodically. Follow this cleaning with one or two clean oil patches. Important: If your gun is equipped with choke tubes do not use a brass brush to clean the barrels without having a choke tube installed. Barrels that utilize choke tubes must also have the choke tubes removed to clean and oil the threads inside the barrel and the choke tubes themselves. This will protect the threads and prevent dirt build up that can cause tubes to become difficult to remove.

Never fire your gun without choke tubes snugly tightened in barrels. Do not over tighten choke tubes. Wipe all exposed metal surfaces with an oiled cloth before storing. Do not squirt or pour oil into the inside mechanism because it may hamper proper functioning. After extended periods of heavy use, your gun should be taken to a qualified gunsmith to have the action disassembled for professional cleaning and lubrication.

STORAGE

Clean thoroughly and oil your gun before storage. Store the gun in a case to prevent scratches and dents. Store your firearm in a dry place to prevent corrosion. **Store the gun away from children and in a place where it cannot be obtained by those unauthorized to use it. Always store gun unloaded and separately from any ammunition.**

HAZARDOUS MATERIAL WARNING.

Discharging firearms in poorly ventilated areas, cleaning firearms, or handling ammunition, may result in exposure to lead and other substances known to cause birth defects, reproductive harm, and other serious injury. Have adequate ventilation at all times. Wash hands thoroughly after exposure.

PARTS

To order parts, please be ready with the following information: Your name, address, telephone number, firearm serial number make and model and payment information. Call TriStar Service Department (816) 421-1400

For Service;

Ship the firearm prepaid to:

**TriStar Arms, INC.
1816 Linn Street
North Kansas City, MO. 64116**

THANK YOU

Thank you for purchasing a Tristar Shotgun. We are sure this gun will bring you years of hunting and/or shooting pleasure. Your satisfaction is the key to our success. Please let us know if we can be of service and relay any observations about your gun performance or appearance. For your questions or comments please visit www.tristararms.com

PURCHASER'S RECORD

Model Number

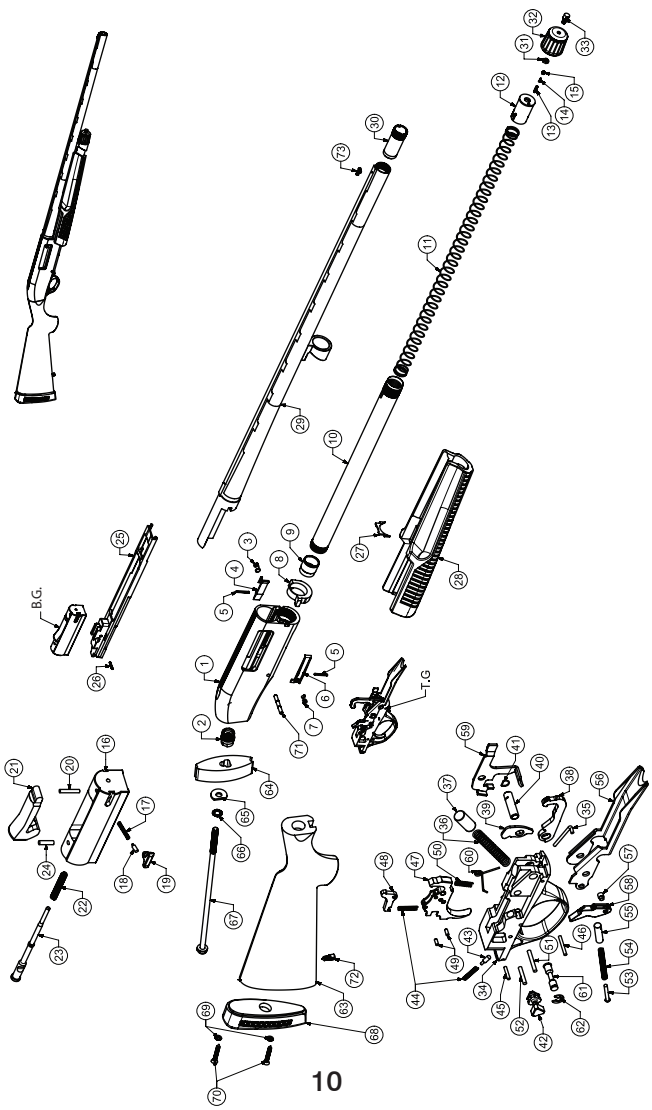
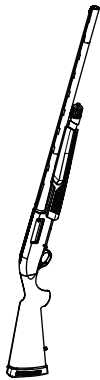
Purchase Date

Gauge or Caliber

Serial Number

Purchase Price

Store Name



PART NO	DESCRIPTION
1	Receiver
2	Stock Bolt
3	Shell Stop Spring
4	Shell Stop
5	Shell Stop Pin
6	Carrier Latch
7	Carrier Latch Spring
8	Forend Lever
9	Magazine Short Spring Cap
10	Magazine Tube
11	Magazine Spring
12	Magazine Spring Cap
13	Magazine Cap Lock Spring
14	Magazine Cap Lock Pin
15	Magazine Cap Lock Pin Screw
16	Bolt
17	Extractor Spring
18	Extractor Spring Pin
19	Extractor
20	Extractor Pin
21	Locking Bar
22	Firing Pin Spring
23	Firing Pin
24	Firing Retaining Pin
25	Action Arm
26	Action Arm Pin
27	Forend Latch
28	Forend
29	Barrel
30	Choke Tube
31	Magazine Cap Stud
32	Magazine Cap
33	Magazine Cap Swivel Stud
34	Trigger Guard
35	Lifter Latch Connector
36	Hammer Spring
37	Hammer Spring Cap

PART NO	DESCRIPTION
38	Hammer
39	Hammer Latch
40	Hammer Tube Pin
41	Hammer Tube Piston Ring
42	Manuel Safety
43	Safety Plunger Spring Pin
44	Safety Plunger Spring
45	Safety Spring Retaining Pin
46	Hammer Retaining Pin
47	Trigger
48	Disconnecter
49	Disconnecter Pin
50	Trigger Spring
51	Trigger Stop Pin
52	Trigger Retaining Pin
53	Sear Spring Pin
54	Sear Spring
55	Sear Spring Cap
56	Elevator
57	Sear Pin
58	Sear
59	Slide Lock Lever
60	Slide Lock Lever Spring
61	Elevator Pin
62	Elevator Pivot Pin Segment
63	Stock
64	Stock Plug
65	Stock Bolt Washer
66	Stock Bolt Lock Washer
67	Stock Bolt Screw
68	Recoil Pad
69	Recoil Pad Screw Washer
70	Recoil Pad Screws
71	Receiver Pin
72	Stock Swivel stud
73	Front Sight

SERVICE AGREEMENT AND LIMITED WARRANTY

TriStar agrees to service its products free of charge for defects in materials and workmanship in accordance with the service agreement listed below. The obligation of TriStar under this agreement is limited to the repair or replacement of unserviceable parts and does not cover any incidental or consequential damages. Other than the express warranty contained herein, TriStar makes no warranties, expressed or implied.

TriStar will repair or replace any unserviceable part(s) for (1) year from date of purchase and further will supply free parts for an additional four (4) years in accordance with the above warranty statement provided your firearm had not been altered, abused willfully damaged, or damaged by overpressure ammunition. This agreement is not transferable; its benefits apply only to the original purchaser.

To obtain free service during the time this agreement is in effect, make sure your firearm is unloaded and send to TriStar Arms.

This agreement and the warranties contained herein are void if your registration is not received within thirty (30) days from date of purchase.

Please visit www.tristararms.com to fill out and submit warranty.

SHIPPING

When returning your firearm for service, please take care in packing. Disassemble your gun, wrap in a safe manner and place it in its original box. (THIS BOX WILL PROTECT THE GUN BUT IS NOT DESIGNED FOR SHIPPING). Wrap box in a cardboard box approved for interstate shipping. TriStar is not responsible for damage incurred during shipping.

WARRANTY CARD

NAME OF PURCHASER _____

STREET _____

CITY _____ STATE _____ ZIP _____

PHONE _____

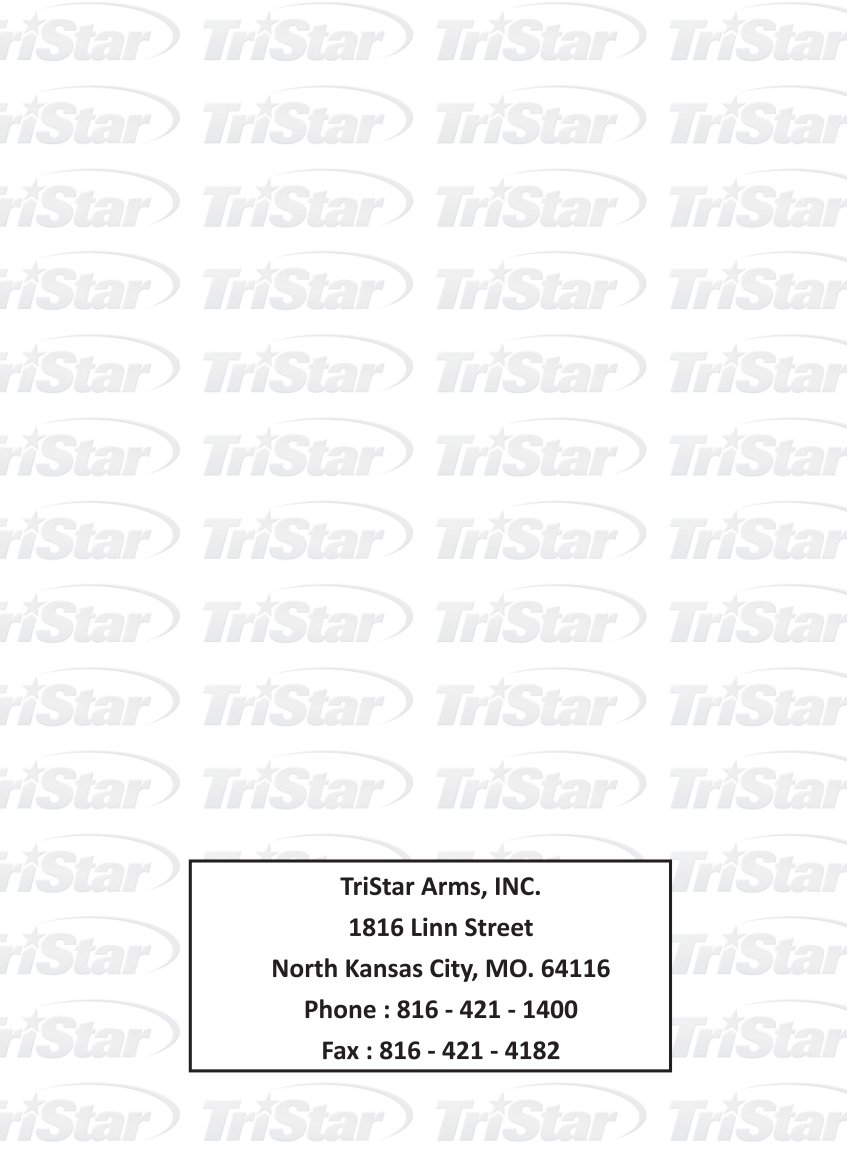
PURCHASE DATE _____

PRODUCT MODEL NUMBER _____

GAUGE _____ SERIAL _____

SIGNATURE _____





TriStar Arms, INC.
1816 Linn Street
North Kansas City, MO. 64116
Phone : 816 - 421 - 1400
Fax : 816 - 421 - 4182