



TriStar

**COMPACT
MAGAZINE FED
SEMI-AUTOMATIC SHOTGUN
INSTRUCTION MANUAL**

**READ THE INSTRUCTIONS AND
WARNINGS IN THIS MANUAL CAREFULLY
BEFORE USING THIS FIREARM**

GUN SAFETY RULES

Observe these rules of safe gun handling.

1. Always keep the muzzle pointed in a safe direction. Watch the muzzle at all times: never point a gun, accidentally or intentionally, at any person or anything you do not intend to shoot. Identify the target before shooting; do not shoot at sounds.
2. Always treat any gun as if it is loaded - it may be!
3. Keep your finger off the trigger while operating the action and at all other times until you are ready to shoot.
4. Keep the safety "on" or in the "safe" position at all times until you are ready to fire the gun. Do not rely on your gun's safety, the safety on any gun is a mechanical device and is not intended as a substitute for common sense or safe gun handling.
5. Learn how your gun functions and handles. If you do not thoroughly understand the proper use and care of your gun, seek the advice of someone who is knowledgeable.
6. Do not alter or modify any parts of this firearm.
7. Store guns unloaded, separate from any ammunition, and where children cannot get to them.
8. Be sure the barrel is clear of any obstructions before loading. Make it a habit to check the barrel every time before loading.
9. Be sure you have and use the proper ammunition. A 20 gauge shell will enter a 12 gauge chamber far enough so that a 12 gauge shell can be loaded behind it. Also, a 3 inch shell may fit into a 2 3/4 inch chamber, but the crimp at the mouth of the shell will unfold into the forcing cone. If either of these things occur and you fire the gun, the gun will explode, damaging the gun and possibly causing serious injury or death to you and those around you.
10. Wear protective shooting glasses and adequate ear protection when shooting.
11. Never climb or jump over anything, such as a tree, fence, or ditch, with a loaded gun. Open the action, remove the shells, and hand the gun to a friend or place it on the ground on the other side of the obstacle before crossing it yourself. Do not lean a gun against a tree or other object; it could fall and possibly discharge.

-
12. Do not shoot at a hard surface or at water. Bullet and shot can ricochet or bounce off and travel in unpredictable directions with great velocity.
 13. Never transport a loaded gun. Do not place a loaded gun into a vehicle. The gun should be unloaded and placed into a case when not in use.
 14. Never drink alcoholic beverages before or during shooting.

ATTENTION

Vertical operating handle comes as an accessory. After extended periods of time and continuous shooting the handle may become loose.

INTRODUCTION TO TRISTAR

TriStar Arms was founded on the principles of value and quality. From rigorous testing to countless research TriStar never stops reaching for more. We are THE VALUE EXPERTS™.

The TriStar Experience is much more than a firearm. It's knowing you are backed by a company that puts the customer first. We offer a Five-Year Warranty on all our firearms. TriStar is known for having one of the best Customer Service Departments in the industry. Our highly trained staff can answer all your questions and help you get back out to doing what you love. A great product at a great price. TriStar Arms.....THE VALUE EXPERTS™.

ABOUT YOUR MAGAZINE FED SEMI-AUTOMATIC SHOTGUN

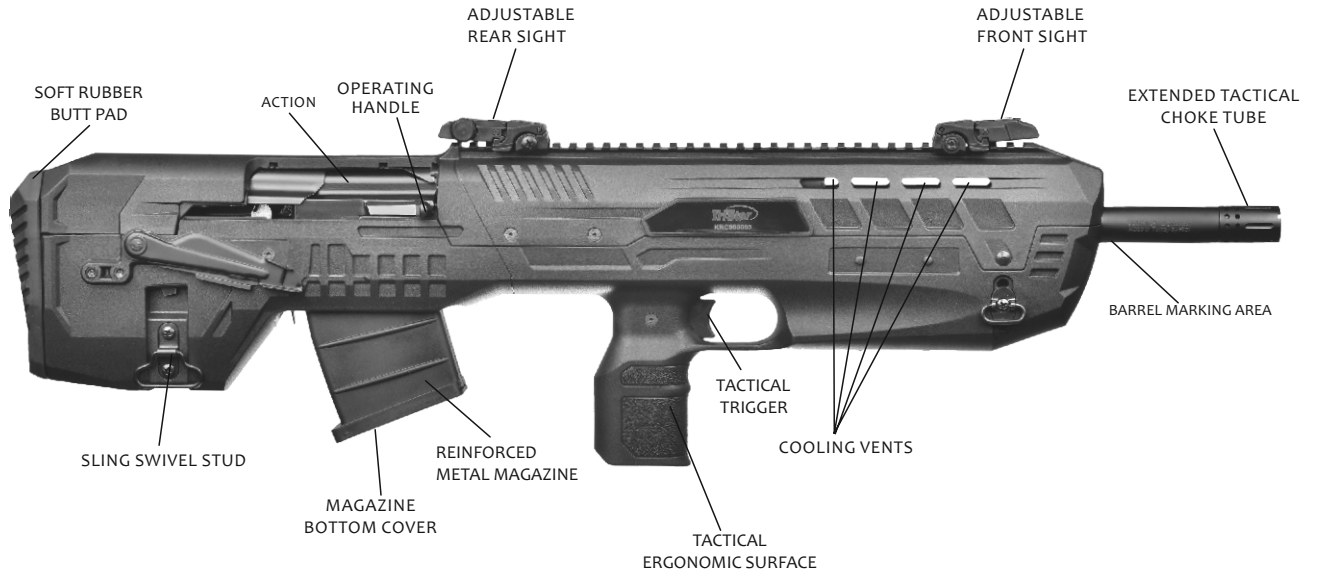
Your Tristar shotgun is gas operated. The gas created from firing a live shot shell operates the action. Once the first shell has been fired, the next shell in the magazine will automatically cycle into the chamber, and this cycle will continue (each time the trigger is pulled) until all shells loaded in the magazine have been fired.

The technologically advanced gas metering system allows you to shoot 2 3/4 " and 3" shells interchangeably. SAFETY SWITCH OR BUTTON The safety is designed to stop the trigger mechanism.

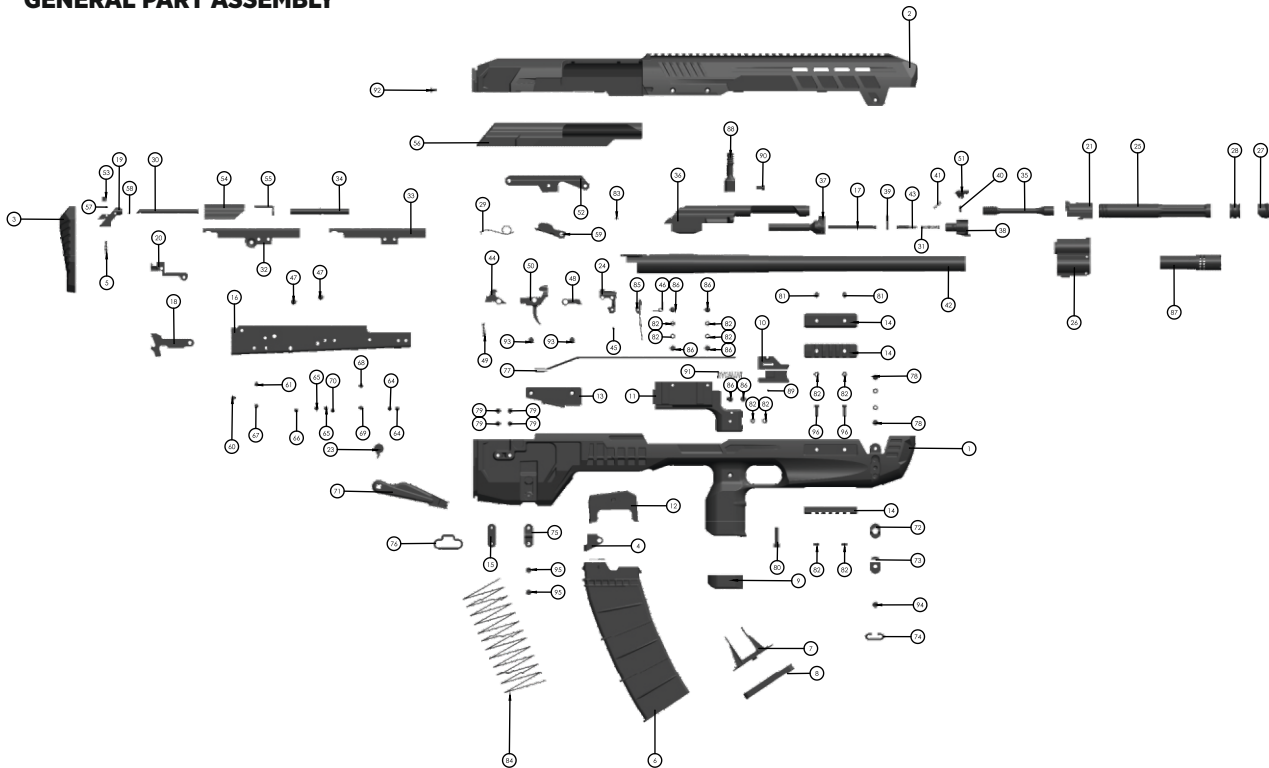
DON'T RELY ON YOUR GUN'S SAFETY. TREAT EVERY GUN AS IF IT WERE LOADED AND READY TO FIRE.

The safety on any gun is a mechanical device, and it is not intended as a substitute for common sense or safe gun handling. Always keep the muzzle pointed in a safe direction.

TRISTAR ARMS GENERAL INFORMATION

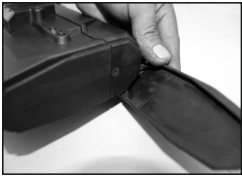


GENERAL PART ASSEMBLY

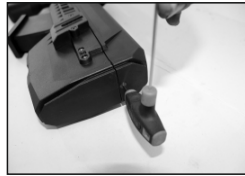


GENERAL PARTS LIST

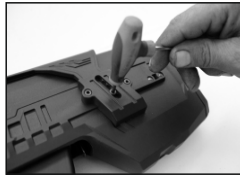
1	COMPACT LOWER BODY	27	GAS CHAMBER NUT	54	UPPER INNER PLATE	79	BODY SCREW REAR
2	COMPACT UPPER BODY	28	GAS PISTON	55	UPPER INNER PLATE RING	80	BODY SCREW FRONT
3	RECOIL PAD	29	HAMMER SPRING	56	MAGAZINE UPPER PLATE	81	PICATINNY CHAMBER
4	MAGAZINE PLATE	30	INNER PIN	57	REAR LATCH PIN 1	82	PICATINNY NUT
5	PLATE LATCH SPRING	31	PIN SPRING	58	REAL LATCH PIN 2	83	BARREL FIXING PIN
6	MAGAZINE	32	SLIDE PLATE RIGHT	59	HAMMER	84	MAGAZINE SPRING
7	MAGAZINE SPRING SEAT	33	SLIDE PLATE LEFT	60	RIVET 5	85	MAGAZINE LATCH
8	MAGAZINE BASE	34	LEVER INNER SPRING PIN	61	RIVET 2	86	TRIGGER BODY SCREW UPPER
9	STOCK LOWER GRIP	35	LEVER END PISTON	62	GAS BLOCK PIN 1	87	MUZZLE BREAK
10	FRONT TRIGGER	36	LEVER	63	GAS BLOCK PIN 2	88	COCKING HANDLE
11	TRIGGER ASSEMBLY BODY	37	ACTION REAR	64	CAP PIN	89	TRIGGER STOP PIN
12	CARTRIDGE LOADER	38	ACTION FRONT	65	RIVET 6	90	COCKING HANDLE CONNECTION SCREW
13	SAFETY BEDDING PLASTIC	39	ACTION PIN LONG	66	RIVET 7	91	TRIGGER SPRING
14	PICATINNY RAIL	40	ACTION EXTRACTOR PIN	67	RIVET 4	92	UPPER REAR CONNECTION SCREW
15	SLING FASTENING PLASTIC	41	ACTION EXTRACTOR SPRING	68	RIVET 8	93	SAFETY SEAT FITTING SCREW
16	MAIN BODY	42	BARREL	69	RIVET 3	94	FRONT SLING SCREW
17	REAR PIN	43	FRONT PIN	70	RIVET 1	95	SLING SCREW REAR
18	UNLOADING LATCH	44	INNER TRIGGER	71	SAFETY	96	PICATINNY SCREW LOWER
19	REAR LATCH	45	MAGAZINE LATCH PIN	72	FRONT SLING PLATE		
20	RECOIL SPRING ASSY SLIDE	46	MAGAZINE LATCH SPRING	73	FRONT SLING BOTTOM PLATE		
21	GAS CHAMBER BEDDING BODY	47	TRIGGER PIN	74	FRONT SLING CABLE		
22	BARREL FIXING CAP	48	TRIGGER SPRING RETAINER	75	REAR SLING PLATE		
23	SAFETY INNER CAST PIECE	49	TRIGGER SPRING	76	REAR SLING CABLE		
24	SAIGA MAGAZINE LAUNCHER	50	TRIGGER	77	RIGGER AND FRONT TRIGGER		
25	GAS TUBE	51	EXTRACTOR		CONNECTING CABLE		
26	GAS CHAMBER	53	UPPER PLATE LATCH	78	CONNECTION SCREW		



1. Remove the recoil pad.



2. Remove the screw under the recoil pad with allen wrench.



3. Remove flank elevator piece set screw.



4. Remove the flank elevator piece from the slide.



5. Remove the ring on the front sling with a screwdriver.



6. Remove the pin by pulling from the other side.



7. Remove screws fastening the upper body to the main body on the the right and left with allen wrench.



7. Remove screws fastening the upper body to the main body on the the right and left with allen wrench.



8. You can separate your gun into two pieces by pressing the upper body from the base.



LOADING YOUR SHOTGUN

1. When the magazine is empty, pull the bolt rearward and use the bolt catch button to lock the action in the open position. To remove the magazine, push the magazine catch button and slide the magazine out of the firearm.
2. Ensure the chamber is empty. Using only ammunition of the correct type and caliber as advised by the manufacturer, load 2 or 5 cartridges (or fewer) into the magazine, according to the capacity of the magazine. Ensure the rims of upper cartridges are in front of the rims of lower cartridges.
3. Slide a loaded magazine into the magazine well until it clicks into the locked position. Pull down on the magazine to verify it is seated. DO NOT "slap" the base of the magazine to seat it in the firearm. This will damage the magazine and it can obstruct the bolt and cause the firearm to malfunction.
4. If the bolt is to the rear, press the top of the bolt catch lever in. This will release the bolt and load your firearm.
5. If the bolt is forward, grasp the cocking handle and pull it all the way to the rear, then release it to move forward freely. This will load the firearm



UNLOADING YOUR SHOTGUN

1. First, always point your firearm in a safe direction. This ensures your safety and that of other shooters around you and your environment in the case of an accidental discharge.
2. Remove your finger from the trigger, depress the magazine catch button fully, and remove the magazine with your other hand.
3. Ensure the magazine is empty. If the bolt is forward, KEEP THE MUZZLE IN A SAFE DIRECTION, and draw the bolt back using the cocking handle. Lock the bolt open using the bolt catch. BE AWARE a live or misfired round COULD be in the chamber.
4. Visually inspect the chamber and magazine to ensure they are unloaded. Use your finger to verify the chamber is empty.
5. Only after verifying your firearms is unloaded, collect any unfired cartridges that may have been in the chamber.



MANUFACTURERS WARNING: THIS MANUFACTURED FIREARM WAS DESIGNED TO PERFORM WITH ITS ORIGINAL PARTS. IT IS YOUR RESPONSIBILITY TO MAKE SURE THAT ANY PARTS YOU BUY ARE AUTHENTIC AND CORRECTLY INSTALLED AND THAT THE PARTS HAVE NOT BEEN ALTERED OR CHANGED. IT IS IMPERATIVE THAT ONLY FACTORY PARTS BE USED AS REPLACEMENTS TO ASSURE THAT THE FIREARM REMAINS FUNCTIONALLY SAFE AND OPERATES ACCURATELY. THE GUN OWNER ACCEPTS FULL RESPONSIBILITY FOR THE CORRECT REASSEMBLY AND FUNCTIONING OF THE FIREARM AFTER ANY DISASSEMBLY OR REPLACEMENT OF PARTS.

IMPORTANT WARNING: BEFORE YOU BEGIN ANY DISASSEMBLY ALWAYS 1) POINT THE SHOTGUN IN A SAFE DIRECTION 2) BE SURE THAT YOU REMOVE THE MAGAZINE FROM THE FIREARM 3) VISUALLY AND MANUALLY INSPECT THE CHAMBER TO CONFIRM THAT IT IS EMPTY.

STORAGE

Clean thoroughly and oil your gun before storage. Store the gun in a case to prevent scratches and dents. Store in a dry place to prevent corrosion. Store the gun away from children and in place where it cannot be obtained by those unauthorized to use it. Always store gun unloaded and separately from any ammunition. **USAGE OF STEEL SHOT** The choke (bore constriction) in all modern shotguns has been established based on the pattern performance of shot shells loaded with lead shot. When using the steel shot shells, you will notice a different performance in pattern density versus the established lead shot pattern, because the steel shot is harder and lighter than lead shot.

You should be aware of the following differences and cautions: Never shoot steel shot loads through a FULL or IMPROVED MODIFIED choke To do so may cause the barrel to swell or rupture. In general, steel shot fired with a modified choke will produce the equivalent of a lead full choke pattern. This will be true of all steel shot sizes up to and including no. 2. The established improved cylinder chokes will produce the equivalent of a (lead) modified choke pattern. All steel shot sized larger than no. 2, and including special sized such as -F-, "T", etc., should be used only with improved cylinder chokes. These steel shot sized, when used in

improved cylinder chokes, will produce patterns equivalent to (lead) full choke patterns. The established cylinder choke or bore will produce the equivalent of a modified (lead) pattern. Additional information concerning the use of steel shot is available from Remington, Winchester, Federal and other ammunition companies.

PARTS

To order parts, please furnish the following information: Your name, address, telephone number, firearm serial number, maker and model. When we receive your request we will send you an order from and a parts breakdown with prices.

Caution: Make sure the gun is unloaded.

1. Make sure that the broad, polished, finely fitted mating surfaces of the breech block and receiver are especially clean and lightly oiled with a high quality gun oil. Do not use pure silicone or lanolin.
2. Run an oil patch through the bore with a cleaning rod starting from the breech end. To prevent leading, use a cleaning solvent and brass brush to clean the bore periodically. Follow this cleaning with one or two clean oil patches. Important: If your gun is equipped with choke tubes, do not use a brass brush to clean the barrels unless a choke tube is installed in each barrel. Barrels that utilize choke tubes must also have the choke tubes removed to clean and oil the threads inside the barrel and the choke tubes themselves. This will protect the threads from being damaged by cleaning tools and also prevent a dirt build up that would cause the choke tube to become difficult to remove from the barrel. Damage can result to choke tubes and barrel when attempting to remove sticky choke tubes.

Never fire your gun without choke tubes snugly tightened in barrels. Do not over tighten choke tubes. Wipe all exposed metal surfaces with an oiled cloth before storing. Do not squirt or pour oil into the inside mechanism because it may

SERVICE AGREEMENT AND LIMITED WARRANTY

Tristar agrees to service its products free of charge for defects in material and workmanship in accordance with the service agreement listed below. The obligation of Tristar under this agreement is limited to the repair or replacement of unserviceable parts and does not cover any incidental or consequential damages. Other than the express warranty contained herein Tristar makes no warranties, express or implied.

Tristar will repair or replace any unserviceable part(s) for one (1) year from date of purchase and further will supply free parts (Wood not included) for an additional four (4) years in accordance with the above warranty statement provided your firearm had not been altered, abused, willfully damaged, or damaged by overpressure ammunition. This agreement is not transferable; its benefits apply only to the original purchaser.

To obtain free service during the time this agreement is in effect, make sure your firearm is unloaded, and send it to Tristar.

This agreement and the warranties contained herein are void if your registration card is not received with a copy of your sales slip within 30 days from date of purchase

SHIPPING

When returning your gun for service, please take care in packing. Disassemble your gun, wrap in paper or other protective material and place gun in the original box. (THIS BOX WILL PROTECT THE GUN BUT IS NOT DESIGNED FOR SHIPPING). Wrap box in a cardboard box approved for interstate shipping.

Tristar is not responsible for damage incurred during shipping.

THANK YOU

Thank you for purchasing a Tristar shotgun We are sure this gun will bring you years of hunting and/or shooting pleasure. Your satisfaction is the key to our success. Please let us know if we can be of service and please relay any observations about your guns performance or appearance.

PURCHASER'S RECORD

Model Number _____

Purchase Date _____

Gauge or Caliber _____

Serial Number _____

Purchase Price _____

Store Name _____

BE COURTEOUS

When shooting or hunting always acquire the permission of the landowner. Respect the land. Do not litter, use gates when possible, leave open gates open and closed gates closed. Drive vehicles only where advance permission has been granted and always express gratitude for use of another persons land. offer your labor or game as repayment for the privilege of use. Remember you are helping develop a reputation for all sportsmen/sportswomen.



Tristar Arms
1816 Linn Street
North Kansas City, MO 64116
PHONE : 816-421-1400
Fax : 816 - 421 - 4182