
CONTENTS

Introduction	2
Operation	2
Safety Rules	3
Ammunition Specifications	4
Assembly	4
Manual Trigger Safety	5
Loading	6
Unloading	7
Disassembly	8
Removing and Re-installing Choke Tubes	10
Removing the Magazine Plug	11
Maintenance	11
Technical Drawings and Part Lists	12
Choke Tubes Information	18
How to Use Pistons	19

INTRODUCTION

This manual provides important information for assembling and using your new gun. Please read the Owner's Manual carefully before handling the gun.

Follow safe gun handling procedure at all times. Get instructions from a competent firearms instructor before using the firearm.

If you have questions or concerns about the assembly or the operation of your gun, see your dealer, or a qualified gunsmith.

Keep this manual, and consult it as needed. If you sell or transfer your gun, make sure the manual stays with the gun.

This shotgun, which is produced with the latest possibilities of the contemporary technology, is reliable and practical about its aesthetics, its operating system and its expertise in service.

OPERATION

This semi-automatic shotgun uses gas pressure from the discharged shell in a precision, spring-loaded mechanism to eject the empty shell, and load a new cartridge into the chamber. The system reduces recoil, and permits the shooter to concentrate on the target.

This shotgun is produced in the high standards of European craftsmanship. The instruction in this book will help to assure that it delivers the fine performance for which it was designed.

SAFETY RULES

1. Always treat all firearms as if they were loaded. Don't rely on the safety. Keep the muzzle pointed in a safe direction at all times.
 2. Never cross a fence, climb a tree or jump across a ditch with a loaded gun. Always carry your gun so that you can control the direction of the muzzle if you fall or tumble.
 3. Never load or carry a loaded gun until you are ready to use it. Never leave a loaded gun unattended, or allow a loaded gun in a building or vehicle.
 4. Watch your muzzle, so that the other person doesn't have to. Never point any gun, loaded or unloaded, at anything you do not intend to shoot.
 5. Keep guns and ammunition separately, and in locked storage. Use a trigger lock or cable lock on the gun.
 6. Don't shoot unless you are absolutely sure of your target and what is beyond it. Never shoot at hard, flat surfaces or at water.
 7. Know the range of your gun. Shotgun pellets can travel 500 yards, and shotgun slugs have a range of 1/2 mile. Always be sure of your backstop, and what lies beyond.
 8. Always wear eye and ear protection when shooting. Make sure that persons close to you are similarly protected.
 9. Always be sure the barrel is clear of any obstruction. Each time you pick up the gun, check the barrel for any possible obstruction. Make sure the barrel is clean, and free of dirt or grease before shooting.
 10. Use the right ammunition. Always use clean, dry, original factory-loaded ammunition of the proper type and gauge for your gun. Carry only the proper ammunition for the gun you are shooting.
- A gun is as safe as the person using it. Make sure that each person who handles the firearm has read the owner's manual, and understands and observes safe gun handling procedure.

AMMUNITION

USE ONLY SUITABLE AMMUNITION

This 12 gauge semi-automatic shotgun is chambered for 3¹/₂ inch magnum shells. It is designed to be used with factory-loaded shotshells between (1¹/₈ oz) (1³/₁₆ oz) up to (2³/₈ oz).

Use of re-loaded ammunition voids the One Year Factory Warranty.

WARNING: Never shoot slugs with a full choke. Use only the most open (improved cylinder) choke, which is marked with four cuts.

WARNING: Never use cartridges with a case longer than the chamber, as this would have serious consequences for both the gun and the shooter.

WARNING: Never shoot steel shot with a full choke. Use only modified, improved

cylinder or skeet choke tubes, marked three, four and five cuts respectively.

Note: Always use ammunition that is powerful enough to fully cycle the action.

ASSEMBLY

MOUNTING THE BARREL TO THE RECEIVER

Make sure the barrel is clean and free of heavy lubrication. Remove the fore-end by unscrewing the fore end nut (counter clockwise). Slide the fore-end off the magazine tube. Mount the barrel to the receiver by sliding the barrel into the receiver, with the barrel ring on the magazine tube. Pull the bolt handle half way back to fully seat the barrel in the receiver. (See figure 1 - 2).

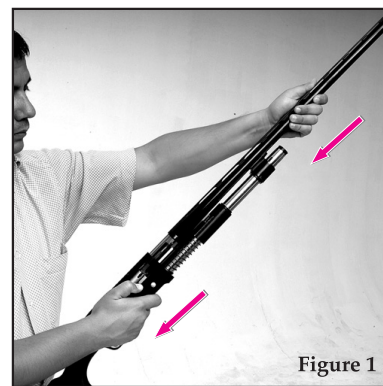


Figure 1

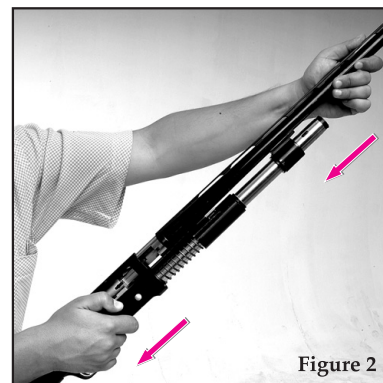


Figure 2

MOUNTING THE FORE-END

Drop the carrier by pressing the trigger guard latch button (the button beside the trigger guard). Pull back the bolt handle. The action should stay open. Mount the fore-end by carefully sliding it over the magazine tube, and seating it into the receiver. (See figure 3) Screw the fore-end nut onto the front of the magazine tube, finger-tight. Close the mechanism by pressing the carrier latch button (the button on the side of the receiver).

the trigger guard. When the trigger safety is "off", the button will protrude from the left side of the trigger guide, and the red band around the button will be visible. The manual trigger safety is intended only to lock the trigger. It is not a substitute for safe gun handling.

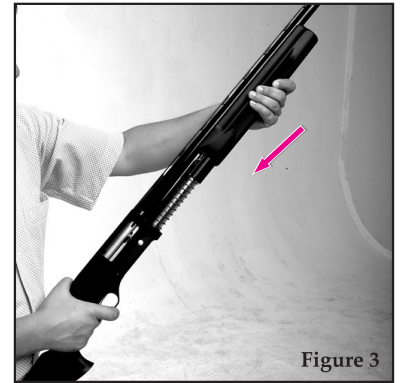


Figure 3

MANUAL TRIGGER SAFETY

Before loading the gun, make sure the manual trigger safety is on. To activate the manual trigger safety, press the manual safety button on the side of the trigger guard from the left side of the gun to the right. When the trigger safety is "on" the black button will protrude from the right side of

LOADING

Put the manual trigger safety "on". Pull the bolt handle fully to the rear, and release it. Load cartridges by sliding them forward into the magazine tube, depressing the cartridge carrier as you do so. (See figure 4)

PLACING CARTRIDGE ON THE CARRIER

After loading the magazine tube, by pulling the button on the side of trigger group, cartridge will drop on the carrier. (See figure 5)

LOADING A CARTRIDGE INTO THE BARREL

In order to move a cartridge from the carrier to the barrel, pull the bolt handle fully to the rear, and release it. The magazine tube holds 2 cartridges when

the magazine plug is installed. The magazine tube holds four 3" cartridges three 3¹/₂" cartridges when the plug has been removed. To load an additional cartridge, load one cartridge into the barrel, then load another cartridge into the magazine tube, and press the cartridge carrier extractor button. When you are ready to fire, put the manual trigger safety in the "off" position. The gun is now ready to fire.

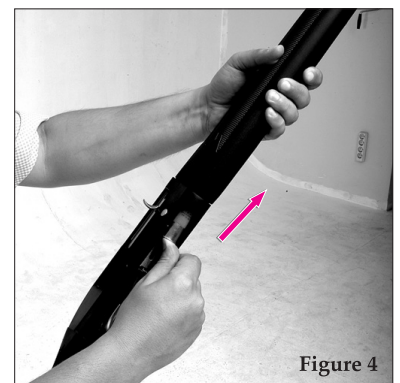


Figure 4

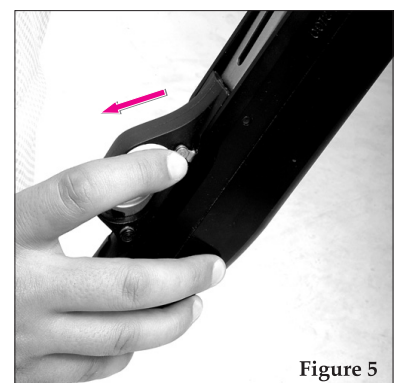


Figure 5

UNLOADING

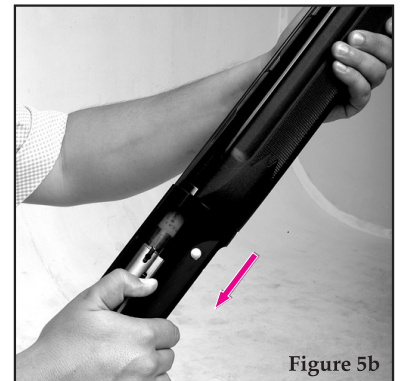
Spent cartridges will be ejected automatically. To unload unspent cartridges from the gun, first be sure the safety is in the "on" position. Never permit your finger or another object to come in contact with the trigger while unloading.

Pull the bolt handle to the rear to eject any cartridge in the chamber. If there is a cartridge in the chamber and a cartridge on the cartridge carrier, this will also load the cartridge from the carrier into the chamber. To eject that cartridge, pull and release the bolt handle again.

If a cartridge remains in the magazine tube, by pulling the button on the side of the trigger guard to place the cartridge on to the carrier. Pull the bolt handle to place that cartridge into the chamber,

then pull it again to eject the cartridge from the chamber. Continue until all cartridges have been ejected. (See figure 5a-5b)

Always check to make sure the gun is completely unloaded when you are not shooting.



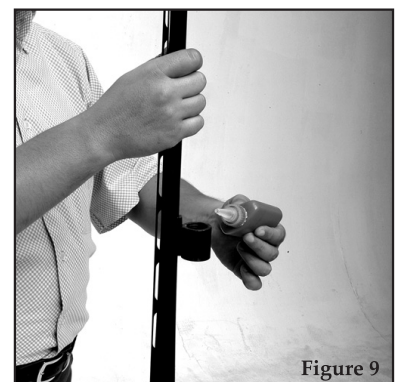
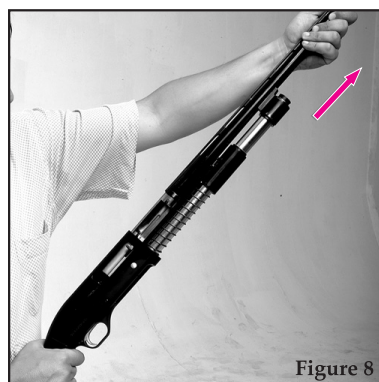
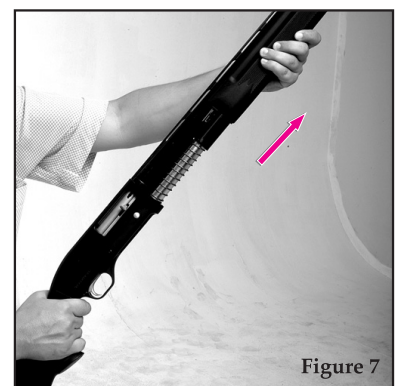
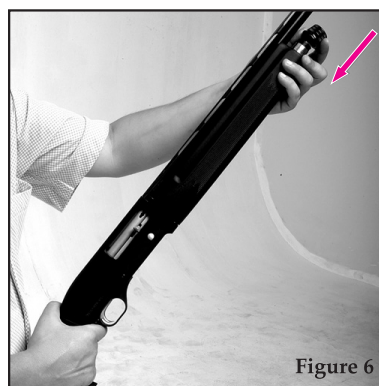
DISASSEMBLY

REMOVING THE FORE-END

Unload the gun. Unscrew the fore-end nut (counter clockwise) and remove it. (See figure 6) Slide the fore-end toward the muzzle, and remove it. (See figure 7)

REMOVING THE BARREL

After removing the fore-end, pull the barrel out of the receiver and slide it off the magazine tube. (See figure 8) In order to assure proper operation of the semi-automatic mechanism, it is important to clean and lubricate the barrel ring and magazine tube also pistons after each shooting session. Use a good quality gun cleaning solvent and oil. (See figure 9).



REMOVING AND INSTALLING THE BOLT GROUP

To remove the bolt group for cleaning or lubrication, with your left hand move the bolt forwards and backwards while acting this way pull the bolt handle straight out from the right side of the bolt. (See figure 10) Lift up the operating rod with your left hand so the bolt group will slide out from the receiver. (See figure 11)

Now lift up the bolt group, pull and take it out from the operating rod piston (See figure 12) than take the bolt from operating rod. (See figure 13)

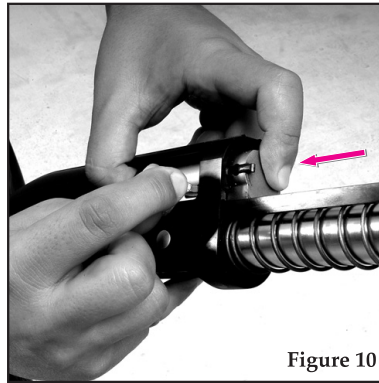


Figure 10

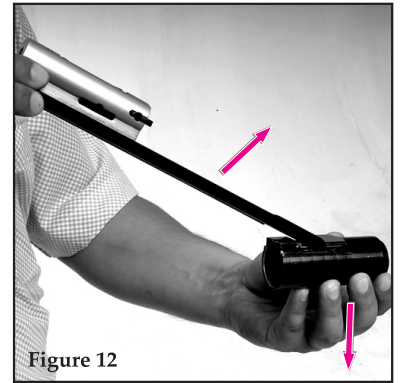


Figure 12

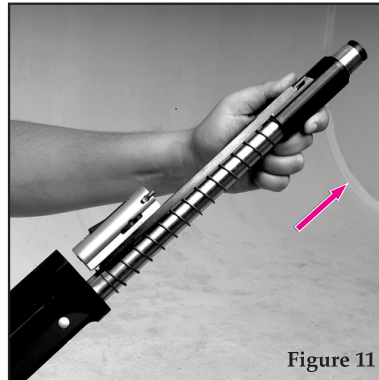


Figure 11

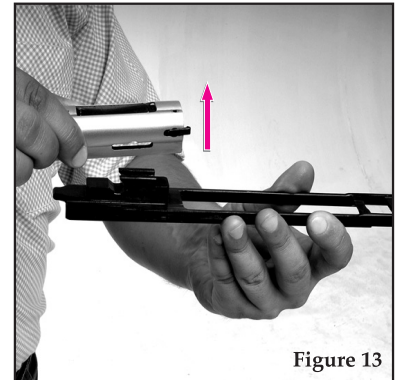


Figure 13

RE-INSTALLING THE BOLT GROUP

After cleaning and lubricating the bolt group, it can be reinstalled by sliding it back into the receiver. The hammer must be cocked during this procedure. Complete the installation by pushing the bolt handle back into the bolt.

REMOVAL AND RE-INSTALLATION OF THE TRIGGER GROUP

Unload the gun. In order to remove the trigger group, push the receiver pin through the receiver and remove it. While pushing the cartridge latch button, push the trigger group forward and remove it. (See figure 14) After cleaning and lubricating the trigger group, it is re-installed by pressing the cartridge latch button while pushing the trigger group rearward. Align the hole in the trigger group with the hole for the receiver pin, and re-install the receiver pin.

REMOVING AND RE-INSTALLING CHOKE TUBES

Unload the gun and put the safety in the "on" position. Remove a choke tube by inserting the choke key, and turning

it counter clockwise. After cleaning and lubricating, a choke tube may be reinstalled by starting the threads by hand, then tightening the choke tube with the choke key. (See figure 15, 16) After each shooting session, the choke tube should be removed, cleaned, lubricated and re-installed to prevent corrosion.

Consult the choke value chart for suggested values.

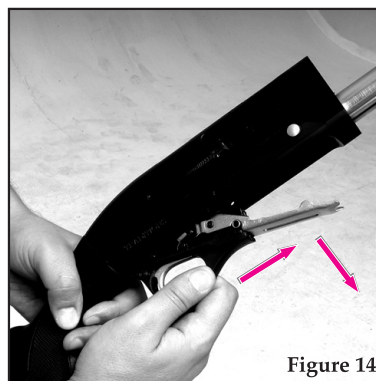


Figure 14

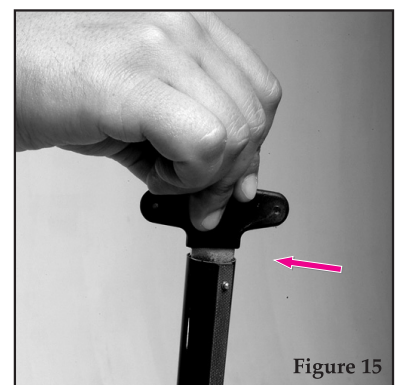


Figure 15

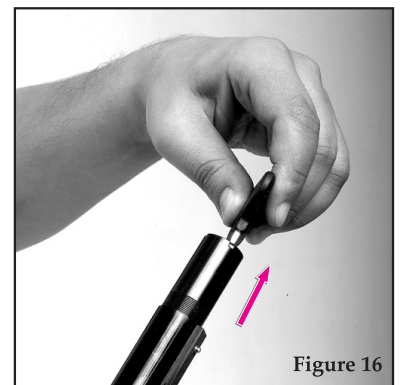


Figure 16

REMOVING THE MAGAZINE PLUG

Since hunting regulations in some areas limit the number of cartridges allowed in the magazine, this shotgun comes with a limiter plug installed that reduces its magazine capacity to two shells.

WARNING: Visually and manually check to be sure no ammunition is present in the chamber or magazine.

To remove this plug, follow the directions below:

Unscrew and remove the fore-end nut. There are two magazine fuse extractors at magazine tube. With your left hand forefinger press one of the magazine fuse extractor and with your right hand by means of a screwdriver or a similar tool press the other magazine fuse extractor and lift two or three millimeter up. Now remove the magazine blocker and pull up the limiter plug from the magazine tube. Replace the fore-end and fore-end nut by screwing in into place. (See figure 17-18)

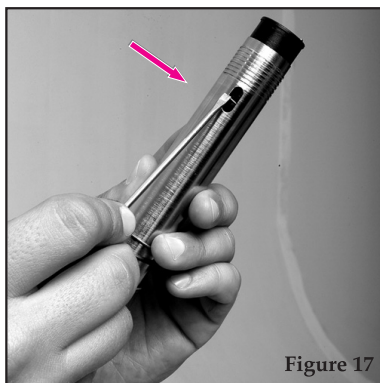


Figure 17

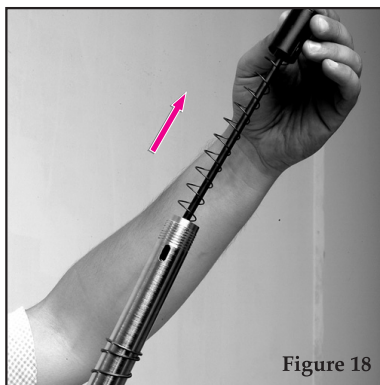


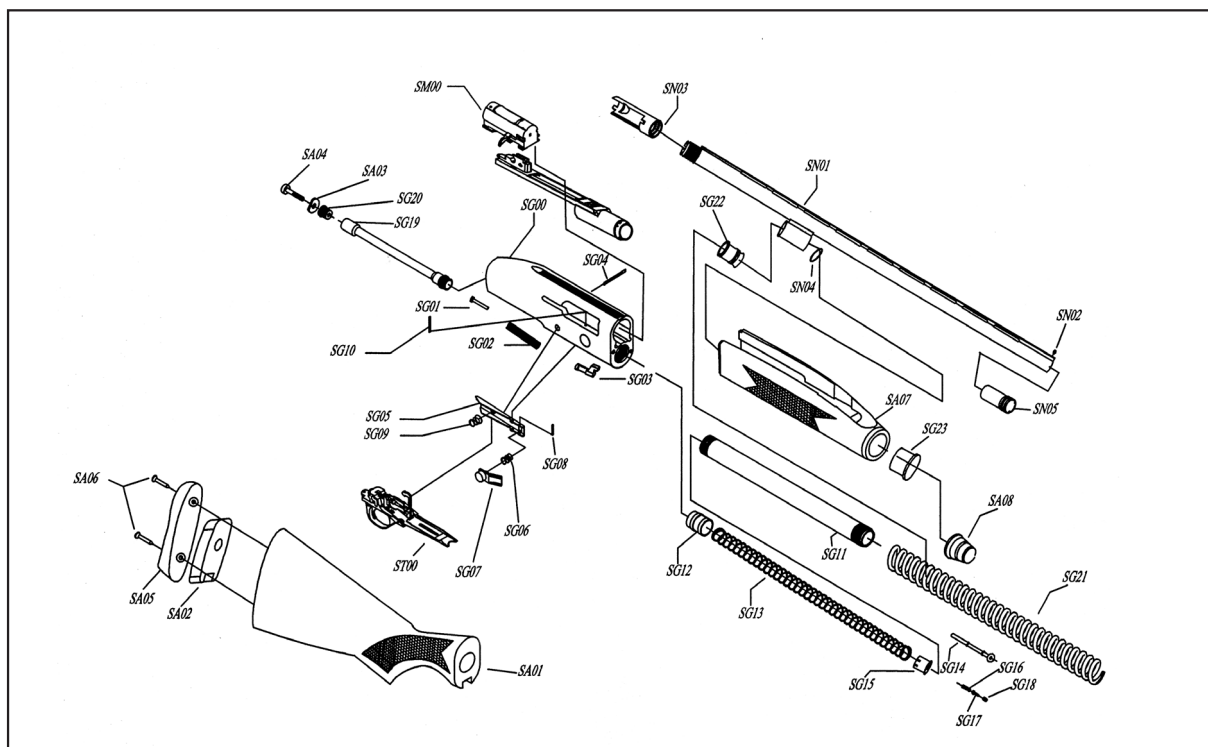
Figure 18

MAINTENANCE

Proper maintenance is important to assure the best functioning of the gun, and the safety of the shooter.

- Before using the shotgun, make sure that the barrel is clean, and free of any grease or obstruction.
- After each shooting session, dismantle the barrel, the barrel choke and the bolt for cleaning and lubrication. After cleaning and lubricating, reinstall them as instructed.
- After every shooting session, clean the magazine tube, the barrel ring and the gas ports (the two small holes that pass from the barrel to the inside of the barrel ring).
- Periodically during a shooting session, check the tightness of the fore-end nut. If the nut becomes loose, gas will leak and the semi-automatic mechanism will not function properly.

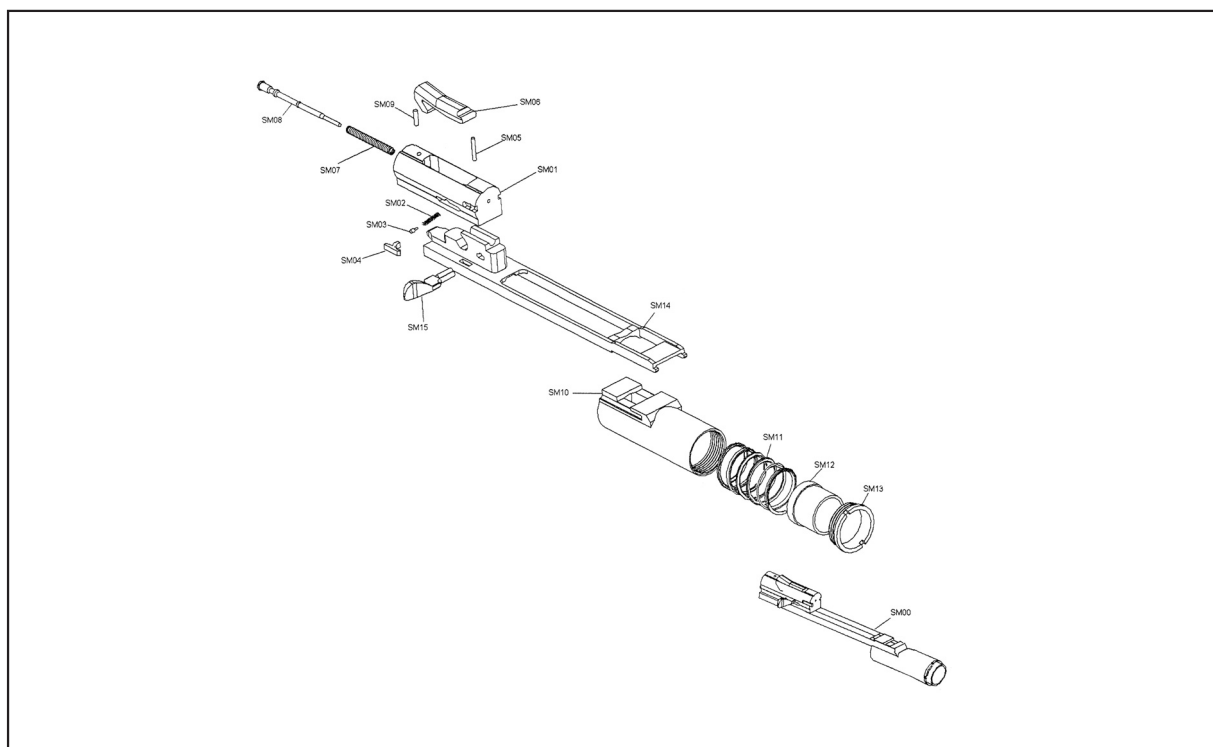
GENERAL ASSEMBLY



GENERAL ASSEMBLY - PART LISTING

Stock No	Description	Stock No	Description
SG00	RECEIVER	SM00	BOLT GROUP
SG01	ENJEKTOR SPRING PIN	SG22	PISTON 1
SG02	ENJEKTOR SPRING	SG23	PISTON 2
SG03	ENJEKTOR	SN01	BARREL
SG04	ENJEKTOR PIN	SN02	FRONT SIGHT
SG05	CARRIER LATCH	SN03	BREECH
SG06	CARRIER LATCH BUTTON SPRING	SN04	GAS HOLE O-RING
SG07	CARRIER LATCH BUTTON	SN05	MOBIL CHOKE (F)
SG08	CARRIER LATCH BUTTON PIN	SN05	MOBIL CHOKE (IM)
SG09	CARRIER LATCH SPRING	SN05	MOBIL CHOKE (M)
SG10	CARRIER LATCH PIN	SN05	MOBIL CHOKE (IC)
SG11	MAGAZINE TUBE	SN05	MOBIL CHOKE (S)
SG12	MAGAZINE CAP	SN06	CHOKE TUBE
SG13	MAGAZINE SPRING	SN07	CHOKE TUBE CAP
SG14	MAGAZINE PLUG	SA01	STOCK (SYNTHETIC)
SG15	MAGAZINE SPRING CAP	SA02	STOCK PLUG
SG16	NUT KOCKING SPRING	SA03	RECOIL TUBE WASHER
SG17	NUT LOCKING	SA04	RECOIL TUBE NUT
SG18	NUT LOCKING SCREW	SA05	RUBBER RECOIL PAD
SG19	RECOIL TUBE	SA06	RUBBER RECOIL PAD SCREW (2pcs)
SG20	RECOIL NUT	SA07	FORE-END
SG21	SLIDING BAR HANDLE SPRING	SA08	FORE-END NUT

BOLT GROUP ASSEMBLY-M00

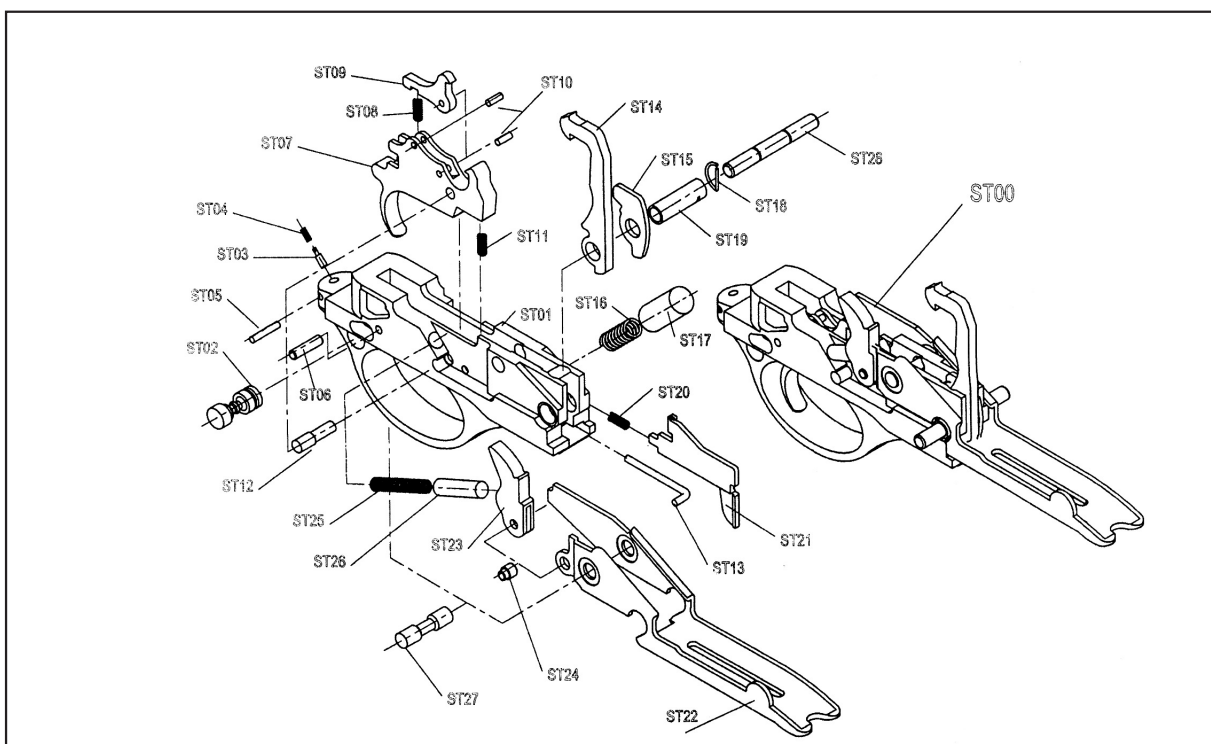


BOLT GROUP - PART LISTING - M00

Stock No Description

SM00	BOLT GROUP
SM01	BOLT
SM02	EXTRACTOR SPRING
SM03	EXTRACTOR SPRING PIN
SM04	EXTRACTOR
SM05	EXTRACTOR PIN
SM06	LOCKING BLOCK
SM07	FIRING PIN SPRING
SM08	FIRING PIN
SM09	FIRING RETAINING PIN
SM10	SLIDING BAR TUBE
SM11	SLIDING BAR TUBE SPRING
SM12	SLIDING BAR FOLLOWER
SM13	SLIDING BAR TUBE NUT
SM14	SLIDING BAR HANDLE
SM15	BOLT HANDLE

TRIGGER GROUP ASSEMBLY-B00







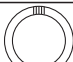
TRIGGER GROUP - PART LISTING - B00

Stock No	Description	Stock No	Description
ST00	TRIGGER GROUP	ST14	HAMMER
ST01	TRIGGER GUARD	ST14	HAMMER LATCH
ST02	HAND SAFETY	ST16	HAMMER SPRING
ST03	SAFETY PLUNGER SPRING PIN	ST17	HAMMER SPRING CAP
ST04	SAFETY PLUNGER SPRING	ST18	HAMMER TUBE PISTON RING
ST05	SAFETY SPRING RETAINING PIN	ST19	HAMMER TUBE PIN
ST06	TRIGGER FIXING PIN	ST20	TRIGGER GUARD LATCH SPRING
ST07	TRIGGER	ST21	TRIGGER GUARD LATCH
ST08	DISCONNECTOR SPRING	ST22	CARRIER
ST09	DISCONNECTOR	ST23	BREECH BOLT LATCH
ST10	DISCONNECTOR PIN	ST24	BREECH BOLT LATCH PIN
ST11	TRIGGER SPRING	ST25	BREECH BOLT LATCH SPRING
ST12	TRIGGER PIN	ST26	BREECH BOLT LATCH SPRING CAP
ST13	HAMMER LATCH SPINDLE	ST27	CARRIER PIN
		ST28	RECEIVER PIN

WHAT'S MULTI CHOKE?

The purpose of multi choke is to make barrel's tip narrowed down to shoot for and more collectively or to enlarge barrel's tip to shoot more wider groupment for small shots.

CHOKE VALUES AND AREAS USED FOR SEMI-AUTOMATIC SHOTGUN

CHOKE VALUE	AREAS USED	SYMBOL
* FULL	For duck and goose hunting with 40-45 yard shots For long range hunting with lead shot and tight groups.	
** IMPROVED MODIFIED	For hunting pheasant, ducks with 30-40 yard shots.	
*** MODIFIED	For hunting woodcock, pheasant & quail with 30-35 yard shots Long range hunting with steel shot and tight groups.	
**** IMPROVED CYLINDER	For quail, dove and target shooting. For shorter distance more open shooting	
***** SKEET	For sporting clay and skeet shooting. Short distance, more open shooting.	

WARNING:
Do not use choke values 1, 2 or 3 with slugs, single bullets or single projectiles. Do not use choke value 1 or 2 with steel shot.

WARNING: Discharging firearms in poorly ventilated areas, cleaning firearms or handling ammunitions may result in exposure to lead and other substances known to the State of California to cause birth defects, reproductive harm, and other serious physical injury. Have adequate ventilation at all times. Wash hands thoroughly after exposure.

HOW TO USE PISTONS

There are two pistons for to discharge the gas (see General Assembly exploded view stock no SG22-SG23) on one piece written light loads (in top of the fore-end) the other one is written heavy loads (in the barrel sing) We recommend to use the pistons as it is shown below. (See figure 19-20-21)

Cartridge (oz)

Starting 1 $\frac{1}{8}$ oz up to 1 $\frac{1}{2}$ oz

USE LIGHT LOADS

Cartridge (oz)

heavy then 1 $\frac{1}{2}$ oz and all 3 $\frac{1}{2}$ oz cartridge

USE HEAVY LOADS

This system is designed reducing the pressure to have comfort to shooter and a long life to the shotgun.



Figure 19



Figure 20



Figure 21

This image shows a blank sheet of white paper with horizontal ruling lines. The lines are evenly spaced and run across the width of the page. There is no text or other markings on the paper.